

Datasheet for ABIN3201018

anti-HBEGF antibody (Bound, EGF Like Domain, Soluble)[Go to Product page](#)

4 Images

4 Publications

Overview

Quantity:	100 µg
Target:	HBEGF
Binding Specificity:	Bound, EGF Like Domain, Soluble
Reactivity:	Human
Host:	Mouse
Clonality:	Monoclonal
Conjugate:	This HBEGF antibody is un-conjugated
Application:	Western Blotting (WB), ELISA, Immunoprecipitation (IP), Immunocytochemistry (ICC), Immunofluorescence (IF)

Product Details

Immunogen:	RecombinanthumanHB-EGFectodomainexpressed inSF21 cell
Clone:	4G10
Isotype:	IgG1
Cross-Reactivity (Details):	Does not react with mouse.
Sterility:	Sterile filtered

Target Details

Target:	HBEGF
Alternative Name:	HB-EGF (HBEGF Products)

Target Details

Background:	Background: Heparin-binding epidermal growth factor-like growth factor (HB-EGF) is synthesized as a membrane-anchored precursor that is proteolytically cleaved to release the soluble mature growth factor, HB-EGF. The former functions as juxtacrine and the latter as paracrine growth factor. Soluble HB-EGF shows several forms in Western blotting with apparent molecular weights 19~27 kDa due to heterogeneous O-glycosylation and N-terminal truncation. HB-EGF activates EGFR and ErbB4 and promotes the development in many tissues. In human ProHB-EGF is the cellular receptor for diphtheria toxin. Non-toxic mutant of diphtheria toxin, CRM197, inhibits HB-EGF function. As HB-EGF level is elevated in most ovarian cancer, CRM197 is being tested as an anticancer drug. The hybridoma clone 4G10 was established and characterized in the laboratory of Prof. E. Mekada of Osaka University, who is a leading scientist in this field.
UniProt:	Q99075
Pathways:	RTK Signaling , Fc-epsilon Receptor Signaling Pathway , EGFR Signaling Pathway , Neurotrophin Signaling Pathway

Application Details

Application Notes:	The antibody can react with both soluble and cell-surface attached forms of HG-EGF. 1) Western blotting: 0.2~1 g/mL 2) Immunoprecipitation: 1 g/mL 3) Indirect immuno-fluorescence staining: 5~11 g/mL
Restrictions:	For Research Use only

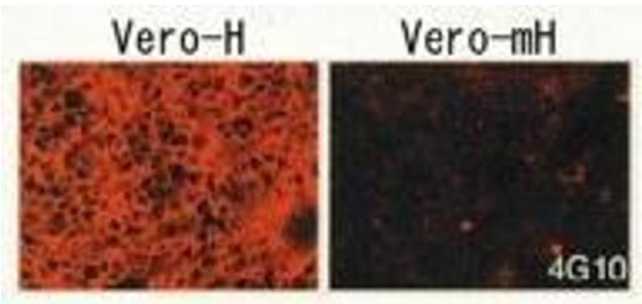
Handling

Format:	Liquid
Concentration:	1 mg/mL
Buffer:	PBS with 50 % Glycerol
Preservative:	Azide free
Storage:	-20 °C
Storage Comment:	Upon arrival centrifuge briefly, aliquote and store at -20 C.

Publications

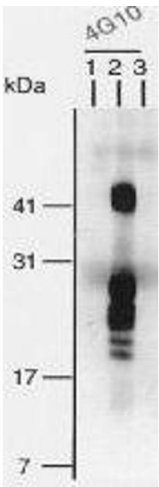
Product cited in:	Yun, Guan, Liu, Zhang, Wang, Qi, Cui, Liu, Zhang, Gao, Gao, Li, Gao, Wang: "Integrin $\alpha\beta 1$
-------------------	--

Modulation Affects Subtype B Avian Metapneumovirus Fusion Protein-mediated Cell-Cell Fusion and Virus Infection." in: **The Journal of biological chemistry**, Vol. 291, Issue 28, pp. 14815-25, (2016) ([PubMed](#)).



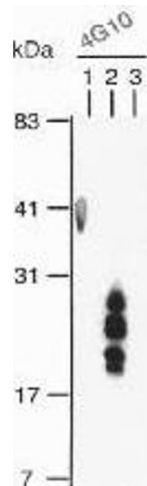
Immunofluorescence

Image 1.



Western Blotting

Image 2.



Western Blotting

Image 3.

Images

Please check the [product details page](#) for more images. Overall 4 images are available for ABIN3201018.