

Datasheet for ABIN320516  
**anti-Kdm6b antibody (AA 1613-1662)**[Go to Product page](#)

## 1 Image

## Overview

Quantity:	100 µL
Target:	Kdm6b
Binding Specificity:	AA 1613-1662
Reactivity:	Human, Mouse, Rat, Dog, Cow, Horse, Rabbit, Pig, Monkey
Host:	Rabbit
Clonality:	Polyclonal
Conjugate:	This Kdm6b antibody is un-conjugated
Application:	Western Blotting (WB)

## Product Details

Immunogen:	Synthetic peptide located between aa1613-1662 of human KDM6B (O15054). Percent identity by BLAST analysis: Human, Chimpanzee, Gorilla, Galago, Marmoset, Mouse, Rat, Dog, Bovine, Rabbit, Horse, Pig (100%).  Type of Immunogen: Synthetic peptide
Isotype:	IgG
Specificity:	Human KDM6B / JMJD3
Predicted Reactivity:	Percent identity by BLAST analysis: Human, Mouse, Rat, Dog (100%).
Purification:	Protein A purified

## Target Details

Target:	Kdm6b
Alternative Name:	KDM6B / JMJD3 ( <a href="#">Kdm6b Products</a> )
Background:	Name/Gene ID: KDM6B  Synonyms: KDM6B, JMJD3, Jumonji domain containing 3, Lysine-specific demethylase 6B, KIAA0346, Lysine demethylase 6B
Gene ID:	23135
UniProt:	<a href="#">O15054</a>
Pathways:	<a href="#">Warburg Effect</a>

## Application Details

Application Notes:	Approved: WB  Usage: ELISA titer using peptide based assay: 1:1562500. Western Blot: Suggested dilution at 1.25 µg/mL in 5 % skim milk / PBS buffer, and HRP conjugated anti-Rabbit IgG should be diluted in 1:50000 - 100000 as second antibody. This antibody is thought to recognize the 644 amino acid splice variant of JMJD3.
Comment:	Target Species of Antibody: Human
Restrictions:	For Research Use only

## Handling

Format:	Lyophilized
Reconstitution:	Distilled Water.
Concentration:	Lot specific
Buffer:	Lyophilized from PBS with 2 % sucrose
Handling Advice:	Avoid repeat freeze-thaw cycles.
Storage:	4 °C, -20 °C
Storage Comment:	Long term: -20°C, the use of 50% glycerol is recommended if storing aliquots in -20°C for long term use (up to 1 year)  Short term (less than 1 week): 4°C. Avoid freeze-thaw cycles.

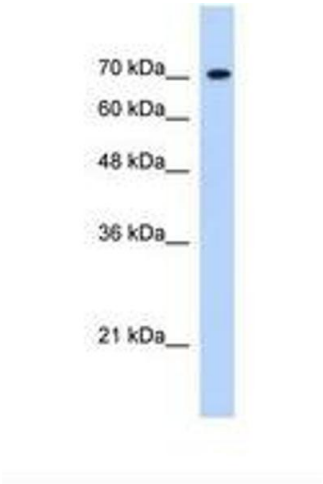


Image 1.