



[Go to Product page](#)

Datasheet for ABIN320634

## anti-MAT1A antibody (AA 21-70)

### 2 Images

#### Overview

Quantity:	100 µL
Target:	MAT1A
Binding Specificity:	AA 21-70
Reactivity:	Human, Mouse, Rat, Dog, Cow, Rabbit, Guinea Pig, Drosophila melanogaster, Chicken, Hamster, Monkey, Pig
Host:	Rabbit
Clonality:	Polyclonal
Conjugate:	This MAT1A antibody is un-conjugated
Application:	Western Blotting (WB), Immunohistochemistry (IHC), Immunohistochemistry (Paraffin-embedded Sections) (IHC (p))

#### Product Details

Immunogen:	Synthetic peptide located between aa21-70 of human MAT1A (Q00266, NP_000420). Percent identity by BLAST analysis: Human, Chimpanzee, Gorilla, Gibbon, Monkey, Galago, Marmoset, Mouse, Rat, Hamster, Elephant, Panda, Dog, Bovine, Rabbit, Pig, Guinea pig, Turkey, Zebra finch, Chicken, Platypus, Drosophila, Nematode (100%), Horse, Opossum, Xenopus, Salmon, Zebrafish (92%), Orangutan, Bat (85%).  Type of Immunogen: Synthetic peptide
Isotype:	IgG
Specificity:	Human MAT1A

## Product Details

---

Predicted Reactivity: Percent identity by BLAST analysis: Human, Dog, Rabbit, Pig, Chicken (100%) Zebrafish (92%).

---

Purification: Protein A purified

---

## Target Details

---

Target: MAT1A

---

Alternative Name: MAT / MAT1A ([MAT1A Products](#))

---

Background: Name/Gene ID: MAT1A

---

Synonyms: MAT1A, AdoMet synthase 1, AdoMet synthetase 1, MAT 1, MAT-I/III, MATA1, AMS1, MAT, SAMS1, SAMS

---

Gene ID: 4143

---

NCBI Accession: [NP\\_000420](#)

---

UniProt: [Q00266](#)

---

Pathways: [Mitotic G1-G1/S Phases](#), [M Phase](#), [Ribonucleoside Biosynthetic Process](#), [Methionine Biosynthetic Process](#)

---

## Application Details

---

Application Notes: Approved: IHC, IHC-P (4 - 8 µg/mL), WB

---

Usage: ELISA titer using peptide based assay: 1:1562500. Western Blot: Suggested dilution at 1.25 µg/mL in 5 % skim milk / PBS buffer, and HRP conjugated anti-Rabbit IgG should be diluted in 1:50000 - 100000 as second antibody.

---

Comment: Target Species of Antibody: Human

---

Restrictions: For Research Use only

---

## Handling

---

Format: Lyophilized

---

Reconstitution: Distilled Water.

---

Concentration: Lot specific

---

Buffer: Lyophilized from PBS with 2 % sucrose

---

## Handling

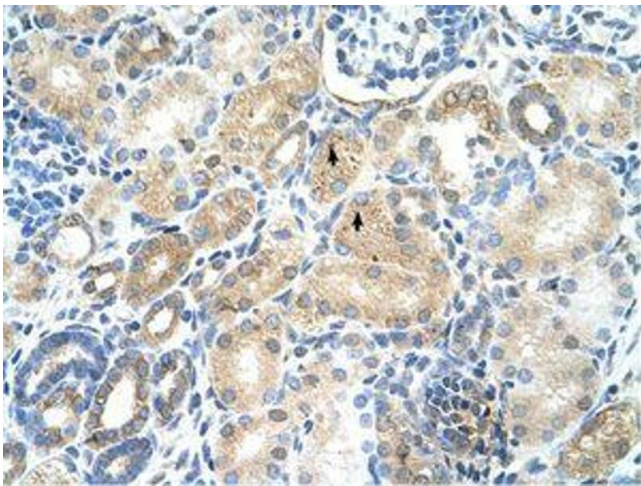
Handling Advice: Avoid repeat freeze-thaw cycles.

Storage: 4 °C, -20 °C

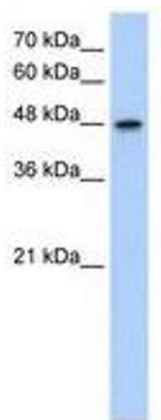
Storage Comment: Long term: -20°C, the use of 50% glycerol is recommended if storing aliquots in -20°C for long term use (up to 1 year)

Short term (less than 1 week): 4°C. Avoid freeze-thaw cycles.

## Images



**Image 1.**



**Image 2.**