

Datasheet for ABIN320656
anti-FTCD antibody (N-Term)



[Go to Product page](#)

2 Images

Overview

Quantity:	100 µL
Target:	FTCD
Binding Specificity:	N-Term
Reactivity:	Human, Mouse, Rat, Dog, Rabbit, Zebrafish (Danio rerio), Horse, Guinea Pig, Cow, Bat
Host:	Rabbit
Clonality:	Polyclonal
Conjugate:	This FTCD antibody is un-conjugated
Application:	Western Blotting (WB), Immunohistochemistry (IHC), Immunohistochemistry (Paraffin-embedded Sections) (IHC (p))

Product Details

Immunogen:	Synthetic peptide from N-Terminus of human FTCD (O95954, NP_006648). Percent identity by BLAST analysis: Human, Gorilla, Galago, Marmoset, Mouse, Rat, Panda, Dog, Bovine, Bat, Rabbit, Horse, Guinea pig, Lizard (100%), Monkey, Elephant, Pig, Zebra finch, Chicken (92%), Xenopus, Frog, Salmon, Zebrafish, Slime mold (85%). Type of Immunogen: Synthetic peptide
Isotype:	IgG
Specificity:	Human FTCD
Predicted Reactivity:	Percent identity by BLAST analysis: Human, Mouse, Rat, Dog, Bovine, Rabbit, Horse, Guinea pig (100%) Pig, Chicken (92%) Zebrafish (85%).

Product Details

Purification: Protein A purified

Target Details

Target: FTCD

Alternative Name: 58K Golgi Protein / FTCD ([FTCD Products](#))

Background: Name/Gene ID: FTCD

Synonyms: FTCD, 58K Golgi Protein, LCHC1

Gene ID: 10841

NCBI Accession: [NP_006648](#)

UniProt: [O95954](#)

Application Details

Application Notes: Approved: IHC, IHC-P, WB

Usage: ELISA titer using peptide based assay: 1:62500. Western Blot: Suggested dilution at 1.25 µg/mL in 5 % skim milk / PBS buffer, and HRP conjugated anti-Rabbit IgG should be diluted in 1:50000 - 100000 as second antibody.

Comment: Target Species of Antibody: Human

Restrictions: For Research Use only

Handling

Format: Lyophilized

Reconstitution: Distilled Water.

Concentration: Lot specific

Buffer: Lyophilized from PBS with 2 % sucrose

Handling Advice: Avoid repeat freeze-thaw cycles.

Storage: 4 °C, -20 °C

Storage Comment: Long term: -20°C, the use of 50% glycerol is recommended if storing aliquots in -20°C for long term use (up to 1 year)

Short term (less than 1 week): 4°C. Avoid freeze-thaw cycles.

Images

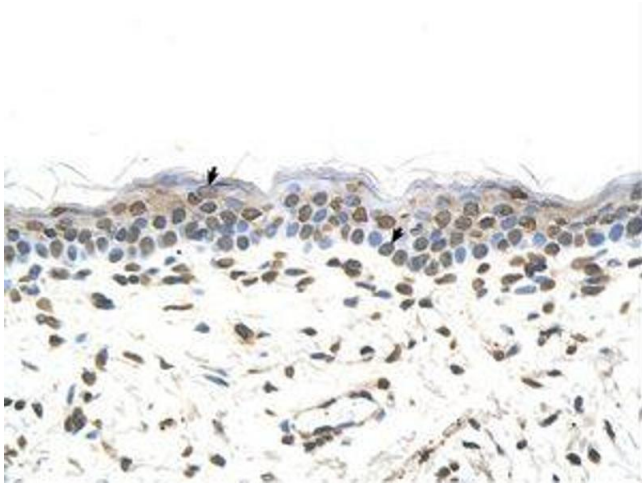


Image 1.



Image 2.