



[Go to Product page](#)

Datasheet for ABIN320684

anti-CES1 antibody (AA 33-82)

1 Image

Overview

Quantity:	100 µL
Target:	CES1
Binding Specificity:	AA 33-82
Reactivity:	Human, Rat, Cow, Dog, Guinea Pig, Monkey
Host:	Rabbit
Clonality:	Polyclonal
Conjugate:	This CES1 antibody is un-conjugated
Application:	Western Blotting (WB)

Product Details

Immunogen:	Synthetic peptide located between aa33-82 of human CES1 (P23141, NP_001020365). Percent identity by BLAST analysis: Human, Gorilla, Gibbon, Monkey (100%), Orangutan, Mouse, Rabbit (92%), Marmoset, Rat, Elephant, Panda, Dog, Cat, Bovine, Pig, Guinea pig, Platypus (85%), Galago (84%), Drosophila, Mosquito (83%). Type of Immunogen: Synthetic peptide
Isotype:	IgG
Specificity:	Human CES1
Predicted Reactivity:	Percent identity by BLAST analysis: Human (100%) Mouse (92%) Rat, Dog, Bovine (85%).
Purification:	Protein A purified

Target Details

Target:	CES1
Alternative Name:	Carboxylesterase 1 / CES1 (CES1 Products)
Background:	Name/Gene ID: CES1 Synonyms: CES1, ACAT, Brain carboxylesterase hBr1, Carboxylesterase 1, Carboxylesterase 2 (liver), CEH, CES1A1, CES1A2, Cocaine carboxylesterase, Egasyn, HMSE, Liver carboxylesterase 1, HCE-1, PCE-1, Retinyl ester hydrolase, TGH, Triacylglycerol hydrolase, REH, SES1, CE-1, Cholesteryl ester hydrolase, HMSE1, Serine esterase 1
Gene ID:	1066
NCBI Accession:	NP_001020365
UniProt:	P23141
Pathways:	Monocarboxylic Acid Catabolic Process

Application Details

Application Notes:	Approved: WB Usage: ELISA titer using peptide based assay: 1:312500. Western Blot: Suggested dilution at 1.25 µg/mL in 5 % skim milk / PBS buffer, and HRP conjugated anti-Rabbit IgG should be diluted in 1:50000 - 100000 as second antibody.
Comment:	Target Species of Antibody: Human
Restrictions:	For Research Use only

Handling

Format:	Lyophilized
Reconstitution:	Distilled Water.
Concentration:	Lot specific
Buffer:	Lyophilized from PBS with 2 % sucrose
Handling Advice:	Avoid repeat freeze-thaw cycles.
Storage:	4 °C,-20 °C
Storage Comment:	Long term: -20°C, the use of 50% glycerol is recommended if storing aliquots in -20°C for long

Handling

term use (up to 1 year)

Short term (less than 1 week): 4°C. Avoid freeze-thaw cycles.

Images

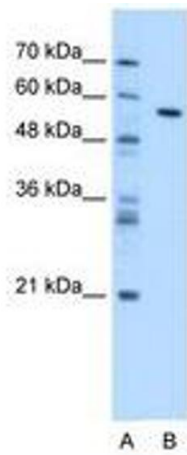


Image 1.