



[Go to Product page](#)

Datasheet for ABIN320712

## anti-SARDH antibody (AA 94-143)

### 2 Images

#### Overview

Quantity:	100 µL
Target:	SARDH
Binding Specificity:	AA 94-143
Reactivity:	Mouse, Rat, Human, Dog, Zebrafish (Danio rerio), Horse, Monkey, Xenopus laevis, Chicken
Host:	Rabbit
Clonality:	Polyclonal
Conjugate:	This SARDH antibody is un-conjugated
Application:	Western Blotting (WB), Immunohistochemistry (IHC), Immunohistochemistry (Paraffin-embedded Sections) (IHC (p))

#### Product Details

Immunogen:	Synthetic peptide located between aa94-143 of human SARDH (Q05BT1). Percent identity by BLAST analysis: Human, Chimpanzee, Gorilla, Orangutan, Gibbon, Monkey, Galago, Marmoset, Mouse, Rat, Elephant, Panda, Dog, Horse, Opossum, Turkey, Zebra finch, Chicken, Xenopus, Stickleback, Zebrafish (100%), Bovine, Pig, Guinea pig, Platypus (92%), Drosophila (84%).  Type of Immunogen: Synthetic peptide
Isotype:	IgG
Specificity:	Human SARDH
Predicted Reactivity:	Percent identity by BLAST analysis: Human, Mouse, Rat, Dog, Horse, Chicken (100%) Bovine, Pig, Guinea pig (92%).

## Product Details

---

Purification: Protein A purified

## Target Details

---

Target: SARDH

Alternative Name: SARDH ([SARDH Products](#))

Background: Name/Gene ID: SARDH

Synonyms: SARDH, DMGDHL1, SARD, SDH, BPR-2, SAR, Sarcosine dehydrogenase

Gene ID: 1757

UniProt: [Q9UL12](#)

## Application Details

---

Application Notes: Approved: IHC, IHC-P, WB

Usage: ELISA titer using peptide based assay: 1:62500. Western Blot: Suggested dilution at 2.5 µg/mL in 5 % skim milk / PBS buffer, and HRP conjugated anti-Rabbit IgG should be diluted in 1:50000 - 100000 as second antibody.

Comment: Target Species of Antibody: Human

Restrictions: For Research Use only

## Handling

---

Format: Lyophilized

Reconstitution: Distilled Water.

Concentration: Lot specific

Buffer: Lyophilized from PBS with 2 % sucrose

Handling Advice: Avoid repeat freeze-thaw cycles.

Storage: 4 °C, -20 °C

Storage Comment: Long term: -20°C, the use of 50% glycerol is recommended if storing aliquots in -20°C for long term use (up to 1 year)

Short term (less than 1 week): 4°C. Avoid freeze-thaw cycles.

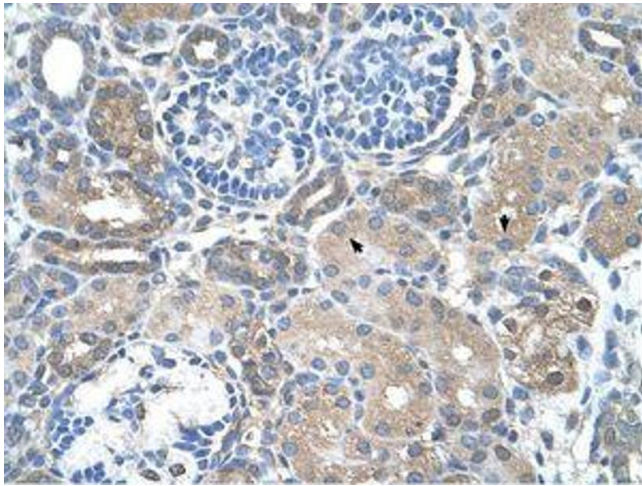


Image 1.



Image 2.