

Datasheet for ABIN320717  
**anti-METTL7A antibody (AA 51-100)**[Go to Product page](#)

## 1 Image

## Overview

Quantity:	100 µL
Target:	METTL7A
Binding Specificity:	AA 51-100
Reactivity:	Human, Mouse, Rat, Cow, Hamster, Monkey
Host:	Rabbit
Clonality:	Polyclonal
Conjugate:	This METTL7A antibody is un-conjugated
Application:	Western Blotting (WB)

## Product Details

Immunogen:	Synthetic peptide located between aa51-100 of human METTL7A (Q9H8H3). Percent identity by BLAST analysis: Human, Chimpanzee, Gorilla, Orangutan, Gibbon, Monkey, Marmoset, Mouse, Rat, Hamster, Elephant (100%), Rabbit (92%), Bovine, Horse (85%).  Type of Immunogen: Synthetic peptide
Isotype:	IgG
Specificity:	Human METTL7A
Predicted Reactivity:	Percent identity by BLAST analysis: Human, Mouse, Rat (100%) Bovine (85%).
Purification:	Protein A purified

## Target Details

Target:	METTL7A
Alternative Name:	METTL7A ( <a href="#">METTL7A Products</a> )
Background:	Name/Gene ID: METTL7A  Synonyms: METTL7A, AAM-B, DKFZP586A0522, Methyltransferase like 7A, Protein AAM-B
Gene ID:	25840
UniProt:	<a href="#">Q9H8H3</a>

## Application Details

Application Notes:	Approved: WB  Usage: ELISA titer using peptide based assay: 1:312500. Western Blot: Suggested dilution at 2.5 µg/mL in 5 % skim milk / PBS buffer, and HRP conjugated anti-Rabbit IgG should be diluted in 1:50000 - 100000 as second antibody.
Comment:	Target Species of Antibody: Human
Restrictions:	For Research Use only

## Handling

Format:	Lyophilized
Reconstitution:	Distilled Water.
Concentration:	Lot specific
Buffer:	Lyophilized from PBS with 2 % sucrose
Handling Advice:	Avoid repeat freeze-thaw cycles.
Storage:	4 °C, -20 °C
Storage Comment:	Long term: -20°C, the use of 50% glycerol is recommended if storing aliquots in -20°C for long term use (up to 1 year)  Short term (less than 1 week): 4°C. Avoid freeze-thaw cycles.

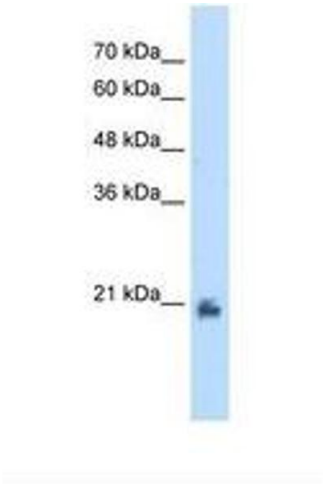


Image 1.