



Datasheet for ABIN320727 anti-UPB1 antibody (AA 181-230)



[Go to Product page](#)

1 Image

Overview

Quantity:	100 µL
Target:	UPB1
Binding Specificity:	AA 181-230
Reactivity:	Human, Mouse, Rat, Dog, Zebrafish (Danio rerio), Horse, Cow, Guinea Pig, Rabbit, Pig, Drosophila melanogaster, Monkey, Xenopus laevis, Bat, Chicken, Hamster
Host:	Rabbit
Clonality:	Polyclonal
Conjugate:	This UPB1 antibody is un-conjugated
Application:	Western Blotting (WB)

Product Details

Immunogen: Synthetic peptide located between aa181-230 of human UPB1 (Q9UBR1, NP_057411). Percent identity by BLAST analysis: Human, Chimpanzee, Gorilla, Orangutan, Gibbon, Monkey, Galago, Marmoset, Mouse, Rat, Hamster, Elephant, Dog, Bovine, Bat, Rabbit, Horse, Pig, Guinea pig, Turkey, Zebra finch, Chicken, Platypus, Xenopus, Frog, Trout, Salmon, Pike, Zebrafish, Sea squirt, Drosophila, Rice, Beetle, Grape (100%), Catfish, Stickleback, Slime mold (92%).

Type of Immunogen: Synthetic peptide

Isotype:	IgG
Specificity:	Human UPB1
Predicted Reactivity:	Percent identity by BLAST analysis: Human, Mouse, Dog, Bovine, Rabbit, Horse, Pig, Chicken,

Product Details

Xenopus, Zebrafish (100%).

Purification: Protein A purified

Target Details

Target: UPB1

Alternative Name: UPB1 ([UPB1 Products](#))

Background: Name/Gene ID: UPB1

Synonyms: UPB1, Beta-alanine synthase, Beta-ureidopropionase, Ureidopropionase, beta, BUP-1, BUP1

Gene ID: 51733

NCBI Accession: [NP_057411](#)

UniProt: [Q9UBR1](#)

Application Details

Application Notes: Approved: WB

Usage: ELISA titer using peptide based assay: 1:1562500. Western Blot: Suggested dilution at 2.5 µg/mL in 5 % skim milk / PBS buffer, and HRP conjugated anti-Rabbit IgG should be diluted in 1:50000 - 100000 as second antibody.

Comment: Target Species of Antibody: Human

Restrictions: For Research Use only

Handling

Format: Lyophilized

Reconstitution: Distilled Water.

Concentration: Lot specific

Buffer: Lyophilized from PBS with 2 % sucrose

Handling Advice: Avoid repeat freeze-thaw cycles.

Storage: 4 °C,-20 °C

Handling

Storage Comment: Long term: -20°C, the use of 50% glycerol is recommended if storing aliquots in -20°C for long term use (up to 1 year)
Short term (less than 1 week): 4°C. Avoid freeze-thaw cycles.

Images

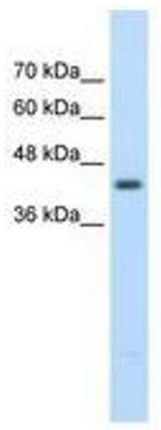


Image 1.