



Datasheet for ABIN320728
anti-BMP2K antibody (AA 551-600)



[Go to Product page](#)

2 Images

Overview

Quantity:	100 µL
Target:	BMP2K
Binding Specificity:	AA 551-600
Reactivity:	Human, Dog, Horse, Rabbit, Monkey, Bat
Host:	Rabbit
Clonality:	Polyclonal
Conjugate:	This BMP2K antibody is un-conjugated
Application:	Western Blotting (WB), Immunohistochemistry (IHC), Immunohistochemistry (Paraffin-embedded Sections) (IHC (p))

Product Details

Immunogen:	Synthetic peptide located between aa551-600 of human BMP2K (Q4W5H2, NP_060063). Percent identity by BLAST analysis: Human, Chimpanzee, Gorilla, Gibbon, Marmoset, Dog, Bat, Rabbit, Horse (100%), Mouse, Rat, Bovine, Opossum, Platypus (92%), Galago (84%), Elephant (82%). Type of Immunogen: Synthetic peptide
Isotype:	IgG
Specificity:	Human BMP2K
Predicted Reactivity:	Percent identity by BLAST analysis: Human, Dog, Rabbit, Horse (100%) Mouse, Rat, Bovine (92%).

Product Details

Purification: Protein A purified

Target Details

Target: BMP2K

Alternative Name: BMP2K / BIKE ([BMP2K Products](#))

Background: Name/Gene ID: BMP2K
Subfamily: NAK
Family: Protein Kinase

Synonyms: BMP2K, BMP2 inducible kinase, BIKE, BMP-2-inducible protein kinase, BMP-2 inducible kinase, HRIHFB2017, Bike kinase

Gene ID: 55589

NCBI Accession: [NP_060063](#)

UniProt: [Q9NSY1](#)

Application Details

Application Notes: Approved: IHC, IHC-P, WB

Usage: ELISA titer using peptide based assay: 1:312500. Western Blot: Suggested dilution at 5.0 µg/mL in 5 % skim milk / PBS buffer, and HRP conjugated anti-Rabbit IgG should be diluted in 1:50000 - 100000 as second antibody.

Comment: Target Species of Antibody: Human

Restrictions: For Research Use only

Handling

Format: Lyophilized

Reconstitution: Distilled Water.

Concentration: Lot specific

Buffer: Lyophilized from PBS with 2 % sucrose

Handling Advice: Avoid repeat freeze-thaw cycles.

Handling

Storage: 4 °C, -20 °C

Storage Comment: Long term: -20°C, the use of 50% glycerol is recommended if storing aliquots in -20°C for long term use (up to 1 year)
Short term (less than 1 week): 4°C. Avoid freeze-thaw cycles.

Images

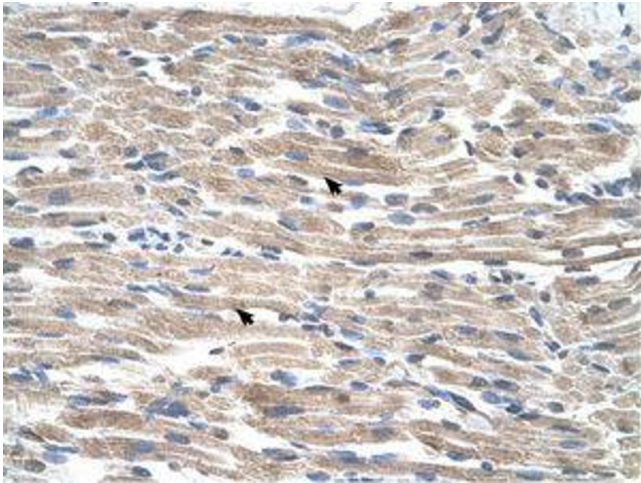


Image 1.

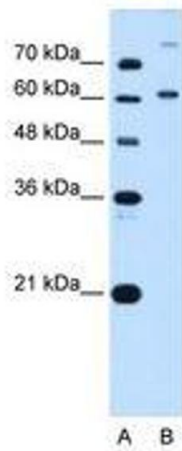


Image 2.