



[Go to Product page](#)

Datasheet for ABIN320741
anti-Niban antibody (AA 101-150)

1 Image

Overview

Quantity:	100 µL
Target:	Niban (FAM129A)
Binding Specificity:	AA 101-150
Reactivity:	Human, Mouse, Rat, Cow, Guinea Pig, Horse, Pig, Rabbit
Host:	Rabbit
Clonality:	Polyclonal
Conjugate:	This Niban antibody is un-conjugated
Application:	Western Blotting (WB)

Product Details

Immunogen:	Synthetic peptide located between aa101-150 of human FAM129A (Q9BZQ8, NP_443198). Percent identity by BLAST analysis: Human, Chimpanzee, Gibbon, Marmoset (100%), Monkey, Bat, Opossum (92%), Elephant, Bovine, Rabbit, Horse, Pig, Platypus (85%), Mouse, Rat, Hamster (84%). Type of Immunogen: Synthetic peptide
Isotype:	IgG
Specificity:	Human FAM129A
Predicted Reactivity:	Percent identity by BLAST analysis: Bovine, Rabbit, Horse, Pig (85%) Mouse, Rat (84%).
Purification:	Protein A purified

Target Details

Target:	Niban (FAM129A)
Alternative Name:	FAM129A / NIBAN (FAM129A Products)
Background:	Name/Gene ID: FAM129A Synonyms: FAM129A, GIG39, NIBAN, Protein FAM129A, Protein Niban, C1orf24
Gene ID:	116496
NCBI Accession:	NP_443198
UniProt:	Q9BZQ8

Application Details

Application Notes:	Approved: WB Usage: ELISA titer using peptide based assay: 1:312500. Western Blot: Suggested dilution at 1.25 µg/mL in 5 % skim milk / PBS buffer, and HRP conjugated anti-Rabbit IgG should be diluted in 1:50000 - 100000 as second antibody.
Comment:	Target Species of Antibody: Human
Restrictions:	For Research Use only

Handling

Format:	Lyophilized
Reconstitution:	Distilled Water.
Concentration:	Lot specific
Buffer:	Lyophilized from PBS with 2 % sucrose
Handling Advice:	Avoid repeat freeze-thaw cycles.
Storage:	4 °C, -20 °C
Storage Comment:	Long term: -20°C, the use of 50% glycerol is recommended if storing aliquots in -20°C for long term use (up to 1 year) Short term (less than 1 week): 4°C. Avoid freeze-thaw cycles.

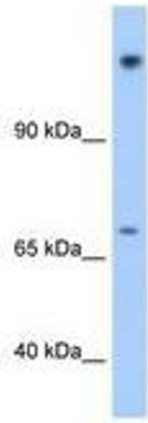


Image 1.