



[Go to Product page](#)

Datasheet for ABIN320783

anti-RNF146 antibody (C-Term)

1 Image

Overview

Quantity:	100 µL
Target:	RNF146
Binding Specificity:	C-Term
Reactivity:	Human, Mouse, Dog, Horse
Host:	Rabbit
Clonality:	Polyclonal
Conjugate:	This RNF146 antibody is un-conjugated
Application:	Western Blotting (WB)

Product Details

Immunogen:	Synthetic peptide from C-Terminus of human RNF146 (Q9NTX7-2, NP_112225). Percent identity by BLAST analysis: Human, Chimpanzee, Gorilla, Orangutan, Marmoset, Mouse, Horse (100%), Gibbon, Monkey, Panda, Pig, Guinea pig (92%), Dog (85%), Elephant (82%). Type of Immunogen: Synthetic peptide
Isotype:	IgG
Specificity:	Human RNF146
Predicted Reactivity:	Percent identity by BLAST analysis: Mouse, Horse (100%) Pig, Guinea pig (92%) Dog (85%).
Purification:	Protein A purified

Target Details

Target:	RNF146
Alternative Name:	RNF146 (RNF146 Products)
Background:	Name/Gene ID: RNF146 Synonyms: RNF146, DJ351K20.1, Iduna, Ring finger protein 146, Dactylidin, RP3-351K20.1
Gene ID:	81847
NCBI Accession:	NP_112225
UniProt:	Q9NTX7

Application Details

Application Notes:	Approved: WB Usage: ELISA titer using peptide based assay: 1:1562500. Western Blot: Suggested dilution at 1.25 µg/mL in 5 % skim milk / PBS buffer, and HRP conjugated anti-Rabbit IgG should be diluted in 1:50000 - 100000 as second antibody.
Comment:	Target Species of Antibody: Human
Restrictions:	For Research Use only

Handling

Format:	Lyophilized
Reconstitution:	Distilled Water.
Concentration:	Lot specific
Buffer:	Lyophilized from PBS with 2 % sucrose
Handling Advice:	Avoid repeat freeze-thaw cycles.
Storage:	4 °C, -20 °C
Storage Comment:	Long term: -20°C, the use of 50% glycerol is recommended if storing aliquots in -20°C for long term use (up to 1 year) Short term (less than 1 week): 4°C. Avoid freeze-thaw cycles.

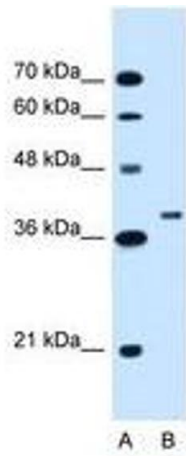


Image 1.