

Datasheet for ABIN320797

anti-M6PR antibody (AA 51-100)



[Go to Product page](#)

1 Image

Overview

Quantity:	100 µL
Target:	M6PR
Binding Specificity:	AA 51-100
Reactivity:	Human, Mouse, Rat, Dog, Guinea Pig, Rabbit, Pig
Host:	Rabbit
Clonality:	Polyclonal
Conjugate:	This M6PR antibody is un-conjugated
Application:	Western Blotting (WB)

Product Details

Immunogen:	Synthetic peptide located between aa51-100 of human M6PR (P20645, NP_002346). Percent identity by BLAST analysis: Human, Chimpanzee, Gorilla, Gibbon, Monkey, Galago, Mouse, Rat, Rabbit, Pig, Guinea pig (100%), Orangutan, Marmoset, Elephant, Panda, Bat (92%), Dog, Horse (85%), Bovine (84%). Type of Immunogen: Synthetic peptide
Isotype:	IgG
Specificity:	Human M6PR
Predicted Reactivity:	Percent identity by BLAST analysis: Human, Mouse, Rabbit, Pig, Guinea pig (100%) Dog (85%).
Purification:	Protein A purified

Target Details

Target:	M6PR
Alternative Name:	M6PR (M6PR Products)
Background:	Name/Gene ID: M6PR Synonyms: M6PR, CD-MPR, SMPR, MPR46, MPRD, Mr 46,000 Man6PR, CD Man-6-P receptor, MPR 46, MPR-46
Gene ID:	4074
NCBI Accession:	NP_002346
UniProt:	P20645

Application Details

Application Notes:	Approved: WB Usage: ELISA titer using peptide based assay: 1:312500. Western Blot: Suggested dilution at 5.0 µg/mL in 5 % skim milk / PBS buffer, and HRP conjugated anti-Rabbit IgG should be diluted in 1:50000 - 100000 as second antibody.
Comment:	Target Species of Antibody: Human
Restrictions:	For Research Use only

Handling

Format:	Lyophilized
Reconstitution:	Distilled Water.
Concentration:	Lot specific
Buffer:	Lyophilized from PBS with 2 % sucrose
Handling Advice:	Avoid repeat freeze-thaw cycles.
Storage:	4 °C,-20 °C
Storage Comment:	Long term: -20°C, the use of 50% glycerol is recommended if storing aliquots in -20°C for long term use (up to 1 year) Short term (less than 1 week): 4°C. Avoid freeze-thaw cycles.

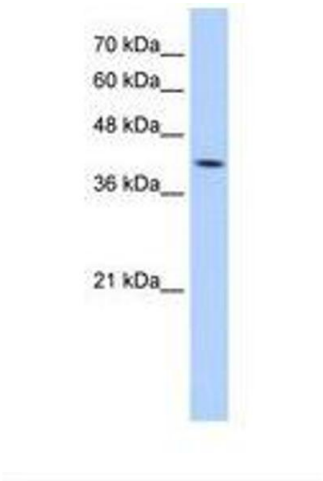


Image 1.