



[Go to Product page](#)

Datasheet for ABIN320802
anti-GCDH antibody (C-Term)

2 Images

Overview

Quantity:	100 µL
Target:	GCDH
Binding Specificity:	C-Term
Reactivity:	Human, Mouse, Rat, Zebrafish (Danio rerio), Rabbit, Dog, Horse, Pig, Cow, Monkey, Bat, Drosophila melanogaster
Host:	Rabbit
Clonality:	Polyclonal
Conjugate:	This GCDH antibody is un-conjugated
Application:	Western Blotting (WB), Immunohistochemistry (IHC), Immunohistochemistry (Paraffin-embedded Sections) (IHC (p))

Product Details

Immunogen:	Synthetic peptide from C-Terminus of human GCDH (Q92947, NP_000150). Percent identity by BLAST analysis: Human, Chimpanzee, Gorilla, Gibbon, Monkey, Galago, Marmoset, Mouse, Rat, Elephant, Panda, Dog, Bovine, Bat, Rabbit, Horse, Pig, Opossum, Platypus, Lizard, Salmon, Zebrafish, Drosophila, Slime mold, Beetle (100%), Xenopus (92%). Type of Immunogen: Synthetic peptide
Isotype:	IgG
Specificity:	Human GCDH
Predicted Reactivity:	Percent identity by BLAST analysis: Human, Mouse, Rat, Dog, Bovine, Rabbit, Horse, Pig,

Product Details

Zebrafish (100%) Xenopus (92%).

Purification: Protein A purified

Target Details

Target: GCDH

Alternative Name: GCD / GCDH ([GCDH Products](#))

Background: Name/Gene ID: GCDH

Synonyms: GCDH, ACAD5, Glutaryl-CoA dehydrogenase, GCD

Gene ID: 2639

NCBI Accession: [NP_000150](#)

UniProt: [Q92947](#)

Application Details

Application Notes: Approved: IHC, IHC-P, WB

Usage: ELISA titer using peptide based assay: 1:1562500. Western Blot: Suggested dilution at 2.5 µg/mL in 5 % skim milk / PBS buffer, and HRP conjugated anti-Rabbit IgG should be diluted in 1:50000 - 100000 as second antibody.

Comment: Target Species of Antibody: Human

Restrictions: For Research Use only

Handling

Format: Lyophilized

Reconstitution: Distilled Water.

Concentration: Lot specific

Buffer: Lyophilized from PBS with 2 % sucrose

Handling Advice: Avoid repeat freeze-thaw cycles.

Storage: 4 °C, -20 °C

Storage Comment: Long term: -20°C, the use of 50% glycerol is recommended if storing aliquots in -20°C for long

Handling

term use (up to 1 year)

Short term (less than 1 week): 4°C. Avoid freeze-thaw cycles.

Images

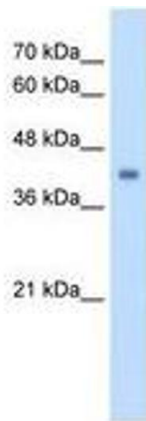
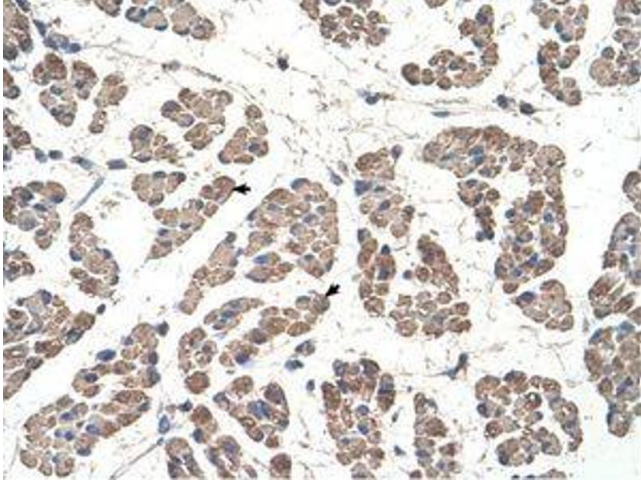


Image 1.

Image 2.