

Datasheet for ABIN320804
anti-GLS2 antibody (AA 241-290)



[Go to Product page](#)

2 Images

Overview

Quantity:	100 µL
Target:	GLS2
Binding Specificity:	AA 241-290
Reactivity:	Human, Mouse, Rat, Dog, Horse, Pig, Zebrafish (Danio rerio), Bat
Host:	Rabbit
Clonality:	Polyclonal
Conjugate:	This GLS2 antibody is un-conjugated
Application:	Western Blotting (WB), Immunohistochemistry (IHC), Immunohistochemistry (Paraffin-embedded Sections) (IHC (p))

Product Details

Immunogen:	Synthetic peptide located between aa241-290 of human GLS2 (Q9UI32). Percent identity by BLAST analysis: Human, Chimpanzee, Gorilla, Gibbon, Monkey, Galago, Mouse, Rat, Elephant, Panda, Dog, Bat, Horse, Pig, Opossum (100%), Marmoset, Bovine, Rabbit, Guinea pig (92%). Type of Immunogen: Synthetic peptide
Isotype:	IgG
Specificity:	Human GLS2 / Glutaminase 2
Predicted Reactivity:	Percent identity by BLAST analysis: Human, Dog, Horse (100%) Bovine, Rabbit, Guinea pig (92%).
Purification:	Protein A purified

Target Details

Target:	GLS2
Alternative Name:	GLS2 / Glutaminase 2 (GLS2 Products)
Background:	Name/Gene ID: GLS2 Synonyms: GLS2, GA, Glutaminase 2, Glutaminase I, Glutaminase GA, L-glutaminase, HLGA, L-glutamine amidohydrolase, LGA, Breast cell glutaminase
Gene ID:	27165
UniProt:	Q9UI32
Pathways:	Dicarboxylic Acid Transport , Warburg Effect

Application Details

Application Notes:	Approved: IHC, IHC-P, WB Usage: ELISA titer using peptide based assay: 1:312500. Western Blot: Suggested dilution at 2.5 µg/mL in 5 % skim milk / PBS buffer, and HRP conjugated anti-Rabbit IgG should be diluted in 1:50000 - 100000 as second antibody. Antibody has been tested in IHC using formalin-fixed paraffin-embedded human tissues only.
Comment:	Target Species of Antibody: Human
Restrictions:	For Research Use only

Handling

Format:	Lyophilized
Reconstitution:	Distilled Water.
Concentration:	Lot specific
Buffer:	Lyophilized from PBS with 2 % sucrose
Handling Advice:	Avoid repeat freeze-thaw cycles.
Storage:	4 °C, -20 °C
Storage Comment:	Long term: -20°C, the use of 50% glycerol is recommended if storing aliquots in -20°C for long term use (up to 1 year) Short term (less than 1 week): 4°C. Avoid freeze-thaw cycles.

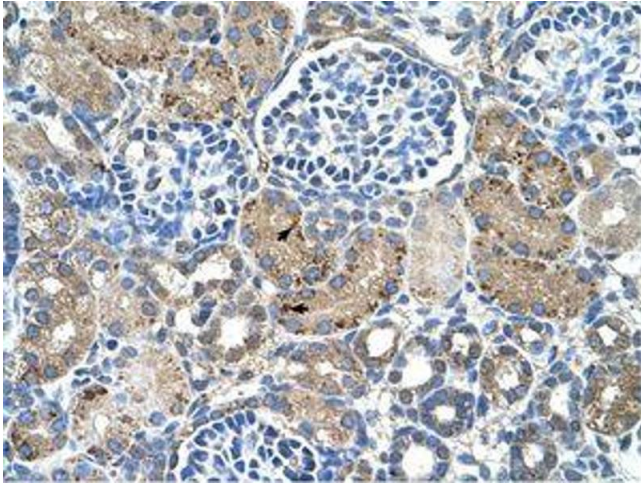


Image 1.

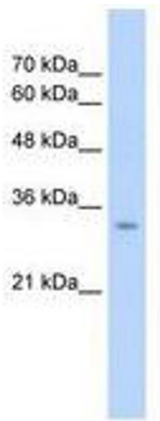


Image 2.