

Datasheet for ABIN320813
anti-NOV antibody (AA 231-280)[Go to Product page](#)

1 Image

Overview

Quantity:	100 µL
Target:	NOV
Binding Specificity:	AA 231-280
Reactivity:	Human, Mouse, Cow, Dog, Guinea Pig, Rabbit, Monkey
Host:	Rabbit
Clonality:	Polyclonal
Conjugate:	This NOV antibody is un-conjugated
Application:	Western Blotting (WB)

Product Details

Immunogen:	Synthetic peptide located between aa231-280 of human NOV (P48745, NP_002505). Percent identity by BLAST analysis: Human, Chimpanzee, Gorilla, Gibbon, Monkey, Marmoset, Rabbit (100%), Mouse, Bat, Horse (85%). Type of Immunogen: Synthetic peptide
Isotype:	IgG
Specificity:	Human NOV / CCN3
Predicted Reactivity:	Percent identity by BLAST analysis: Human (100%) Mouse (85%).
Purification:	Protein A purified

Target Details

Target:	NOV
Alternative Name:	CCN3 / NOV (NOV Products)
Background:	Name/Gene ID: NOV Synonyms: NOV, CCN3, CCN family member 3, IGFBP9, IBP-9, IGFBP-9, NOVh, IGF-binding protein 9, Nephroblastoma overexpressed, Protein NOV homolog
Gene ID:	4856
NCBI Accession:	NP_002505
UniProt:	P48745
Pathways:	Smooth Muscle Cell Migration , Growth Factor Binding

Application Details

Application Notes:	Approved: WB Usage: ELISA titer using peptide based assay: 1:62500. Western Blot: Suggested dilution at 1.25 µg/mL in 5 % skim milk / PBS buffer, and HRP conjugated anti-Rabbit IgG should be diluted in 1:50000 - 100000 as second antibody.
Comment:	Target Species of Antibody: Human
Restrictions:	For Research Use only

Handling

Format:	Lyophilized
Reconstitution:	Distilled Water.
Concentration:	Lot specific
Buffer:	Lyophilized from PBS with 2 % sucrose
Handling Advice:	Avoid repeat freeze-thaw cycles.
Storage:	4 °C, -20 °C
Storage Comment:	Long term: -20°C, the use of 50% glycerol is recommended if storing aliquots in -20°C for long term use (up to 1 year) Short term (less than 1 week): 4°C. Avoid freeze-thaw cycles.

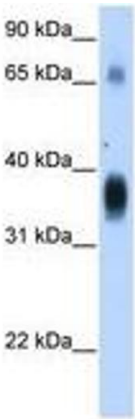


Image 1.