

Datasheet for ABIN320836
anti-SLC25A14 antibody (AA 51-100)[Go to Product page](#)

1 Image

Overview

Quantity:	100 µL
Target:	SLC25A14
Binding Specificity:	AA 51-100
Reactivity:	Human, Mouse, Rat, Dog, Cow, Guinea Pig, Horse, Rabbit, Zebrafish (Danio rerio), Bat, Monkey, Pig
Host:	Rabbit
Clonality:	Polyclonal
Conjugate:	This SLC25A14 antibody is un-conjugated
Application:	Western Blotting (WB)

Product Details

Immunogen:	Synthetic peptide located between aa51-100 of human SLC25A14 (Q5JY88). Percent identity by BLAST analysis: Human, Chimpanzee, Gorilla, Gibbon, Monkey, Galago, Marmoset, Mouse, Rat, Elephant, Panda, Dog, Bovine, Bat, Rabbit, Horse, Pig, Guinea pig, Stickleback, Zebrafish (100%), Chicken, Platypus, Drosophila (92%), Turkey, Zebra finch, Xenopus (85%). Type of Immunogen: Synthetic peptide
Isotype:	IgG
Specificity:	Human SLC25A14
Predicted Reactivity:	Percent identity by BLAST analysis: Human, Mouse, Rat, Dog, Bovine, Rabbit, Pig, Guinea pig, Zebrafish (100%) Chicken (92%).

Product Details

Purification: Protein A purified

Target Details

Target: SLC25A14

Alternative Name: SLC25A14 / UCP5 ([SLC25A14 Products](#))

Background: Name/Gene ID: SLC25A14
Subfamily: Mitochondrial carrier
Family: Transporter

Synonyms: SLC25A14, BMCP1, UCP 5, BMCP-1, UCP5

Gene ID: 9016

UniProt: [O95258](#)

Pathways: [Proton Transport](#)

Application Details

Application Notes: Approved: WB

Usage: ELISA titer using peptide based assay: 1:62500. Western Blot: Suggested dilution at 2.5 µg/mL in 5 % skim milk / PBS buffer, and HRP conjugated anti-Rabbit IgG should be diluted in 1:50000 - 100000 as second antibody.

Comment: Target Species of Antibody: Human

Restrictions: For Research Use only

Handling

Format: Lyophilized

Reconstitution: Distilled Water.

Concentration: Lot specific

Buffer: Lyophilized from PBS with 2 % sucrose

Handling Advice: Avoid repeat freeze-thaw cycles.

Storage: 4 °C, -20 °C

Handling

Storage Comment:	Long term: -20°C, the use of 50% glycerol is recommended if storing aliquots in -20°C for long term use (up to 1 year)
	Short term (less than 1 week): 4°C. Avoid freeze-thaw cycles.

Images

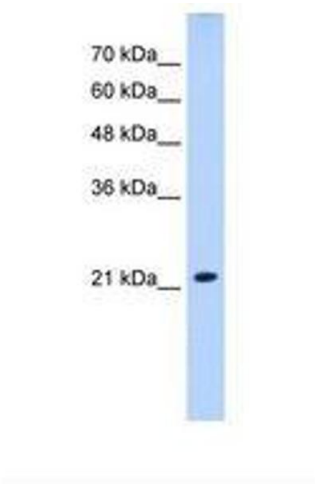


Image 1.