

Datasheet for ABIN320858
anti-SLC25A16 antibody (AA 51-100)[Go to Product page](#)

1 Image

Overview

Quantity:	100 µL
Target:	SLC25A16
Binding Specificity:	AA 51-100
Reactivity:	Human, Mouse, Rat, Cow, Dog, Guinea Pig, Horse, Rabbit, Zebrafish (Danio rerio), Bat, Monkey, Pig
Host:	Rabbit
Clonality:	Polyclonal
Conjugate:	This SLC25A16 antibody is un-conjugated
Application:	Western Blotting (WB)

Product Details

Immunogen:	Synthetic peptide located between aa51-100 of human SLC25A16 (P16260, NP_689920). Percent identity by BLAST analysis: Human, Chimpanzee, Gorilla, Gibbon, Monkey, Galago, Marmoset, Mouse, Rat, Elephant, Dog, Bovine, Bat, Rabbit, Horse, Pig, Guinea pig (100%), Opossum, Turkey, Chicken, Platypus (92%), Stickleback, Zebrafish, Beetle (84%). Type of Immunogen: Synthetic peptide
Isotype:	IgG
Specificity:	Human SLC25A16
Predicted Reactivity:	Percent identity by BLAST analysis: Mouse, Rat, Dog, Bovine, Rabbit, Pig, Guinea pig (100%) Chicken (92%) Zebrafish (84%).

Product Details

Purification: Protein A purified

Target Details

Target: SLC25A16

Alternative Name: SLC25A16 / GDA / Graves ([SLC25A16 Products](#))

Background: Name/Gene ID: SLC25A16
Subfamily: Mitochondrial carrier
Family: Transporter

Synonyms: SLC25A16, D10S105E, Graves disease autoantigen, Graves', HML7, HGT.1, Graves, ML7, GDC, Graves disease carrier protein, Graves' disease autoantigen

Gene ID: 8034

NCBI Accession: [NP_689920](#)

UniProt: [P16260](#)

Application Details

Application Notes: Approved: WB

Usage: ELISA titer using peptide based assay: 1:62500. Western Blot: Suggested dilution at 5.0 µg/mL in 5 % skim milk / PBS buffer, and HRP conjugated anti-Rabbit IgG should be diluted in 1:50000 - 100000 as second antibody.

Comment: Target Species of Antibody: Human

Restrictions: For Research Use only

Handling

Format: Lyophilized

Reconstitution: Distilled Water.

Concentration: Lot specific

Buffer: Lyophilized from PBS with 2 % sucrose

Handling Advice: Avoid repeat freeze-thaw cycles.

Handling

Storage:	4 °C,-20 °C
Storage Comment:	Long term: -20°C, the use of 50% glycerol is recommended if storing aliquots in -20°C for long term use (up to 1 year) Short term (less than 1 week): 4°C. Avoid freeze-thaw cycles.

Images

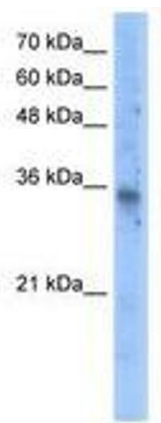


Image 1.