

Datasheet for ABIN320862
anti-SLC26A5 antibody (AA 351-400)[Go to Product page](#)

2 Images

Overview

Quantity:	100 µL
Target:	SLC26A5
Binding Specificity:	AA 351-400
Reactivity:	Human, Mouse, Rat, Dog, Cow, Guinea Pig, Horse, Rabbit, Monkey, Pig, Bat
Host:	Rabbit
Clonality:	Polyclonal
Conjugate:	This SLC26A5 antibody is un-conjugated
Application:	Western Blotting (WB), Immunohistochemistry (IHC), Immunohistochemistry (Paraffin-embedded Sections) (IHC (p))

Product Details

Immunogen:	Synthetic peptide located between aa351-400 of human SLC26A5 (P58743, NP_945350). Percent identity by BLAST analysis: Human, Chimpanzee, Gorilla, Gibbon, Monkey, Galago, Marmoset, Mouse, Rat, Dolphin, Dog, Cat, Bovine, Bat, Rabbit, Horse, Pig, Opossum, Guinea pig (100%), Elephant, Panda, Platypus (92%), Lizard, Stickleback (90%), Hamster (85%). Type of Immunogen: Synthetic peptide
Isotype:	IgG
Specificity:	Human SLC26A5
Predicted Reactivity:	Percent identity by BLAST analysis: Human, Mouse, Rat, Dog, Bovine, Rabbit, Horse, Pig, Guinea pig (100%).

Product Details

Purification: Protein A purified

Target Details

Target: SLC26A5

Alternative Name: SLC26A5 ([SLC26A5 Products](#))

Background: Name/Gene ID: SLC26A5

Subfamily: Sulfate transporter

Family: Transporter

Synonyms: SLC26A5, DFNB61, PRES, Prestin, Prestin (motor protein)

Gene ID: 375611

NCBI Accession: [NP_945350](#)

UniProt: [P58743](#)

Pathways: [Sensory Perception of Sound, Dicarboxylic Acid Transport](#)

Application Details

Application Notes: Approved: IHC, IHC-P, WB

Usage: ELISA titer using peptide based assay: 1:312500. Western Blot: Suggested dilution at 2.5 µg/mL in 5 % skim milk / PBS buffer, and HRP conjugated anti-Rabbit IgG should be diluted in 1:50000 - 100000 as second antibody.

Comment: Target Species of Antibody: Human

Restrictions: For Research Use only

Handling

Format: Lyophilized

Reconstitution: Distilled water

Concentration: Lot specific

Buffer: Lyophilized from PBS with 2 % sucrose

Handling Advice: Avoid repeat freeze-thaw cycles.

Handling

Storage:	4 °C,-20 °C
Storage Comment:	Long term: -20°C, the use of 50% glycerol is recommended if storing aliquots in -20°C for long term use (up to 1 year) Short term (less than 1 week): 4°C. Avoid freeze-thaw cycles.

Images

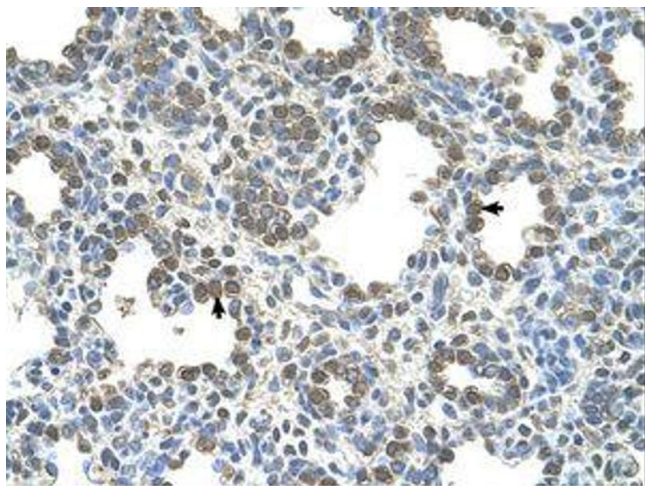


Image 1.

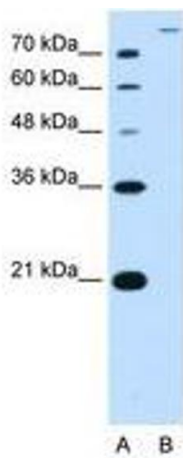


Image 2.