



Datasheet for ABIN320896
anti-NrCAM antibody (AA 251-300)



[Go to Product page](#)

2 Images

Overview

Quantity:	100 µL
Target:	NrCAM (NRCAM)
Binding Specificity:	AA 251-300
Reactivity:	Human, Rat, Cow, Rabbit
Host:	Rabbit
Clonality:	Polyclonal
Conjugate:	This NrCAM antibody is un-conjugated
Application:	Western Blotting (WB), Immunohistochemistry (IHC), Immunohistochemistry (Paraffin-embedded Sections) (IHC (p))

Product Details

Immunogen:	Synthetic peptide located between aa251-300 of human NRCAM (Q92823, NP_001032209). Percent identity by BLAST analysis: Human, Chimpanzee, Gorilla, Orangutan, Gibbon, Monkey, Rat, Rabbit (100%), Marmoset, Mouse, Panda, Bat, Horse, Guinea pig (92%), Elephant, Bovine (85%). Type of Immunogen: Synthetic peptide
Isotype:	IgG
Specificity:	Human NRCAM
Predicted Reactivity:	Percent identity by BLAST analysis: Human (100%) Mouse, Rat (92%) Bovine (85%).
Purification:	Protein A purified

Target Details

Target:	NrCAM (NRCAM)
Alternative Name:	NRCAM (NRCAM Products)
Background:	Name/Gene ID: NRCAM Family: Immunoglobulin Synonyms: NRCAM, Bravo, HBravo, Neuronal surface protein Bravo, KIAA0343, Ng-CAM-related, Nr-CAM
Gene ID:	4897
NCBI Accession:	NP_001032209
UniProt:	Q92823
Pathways:	Regulation of Cell Size

Application Details

Application Notes:	Approved: IHC, IHC-P, WB Usage: ELISA titer using peptide based assay: 1:62500. Western Blot: Suggested dilution at 2.5 µg/mL in 5 % skim milk / PBS buffer, and HRP conjugated anti-Rabbit IgG should be diluted in 1:50000 - 100000 as second antibody.
Comment:	Target Species of Antibody: Human
Restrictions:	For Research Use only

Handling

Format:	Lyophilized
Reconstitution:	Distilled Water.
Concentration:	Lot specific
Buffer:	Lyophilized from PBS with 2 % sucrose
Handling Advice:	Avoid repeat freeze-thaw cycles.
Storage:	4 °C, -20 °C
Storage Comment:	Long term: -20°C, the use of 50% glycerol is recommended if storing aliquots in -20°C for long term use (up to 1 year)

Handling

Short term (less than 1 week): 4°C. Avoid freeze-thaw cycles.

Images

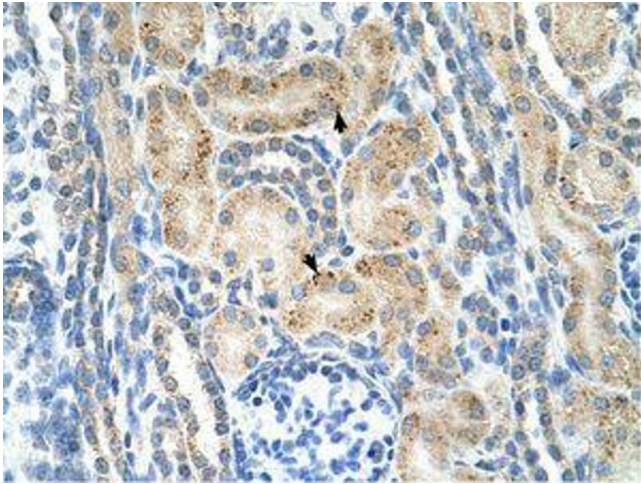


Image 1.



Image 2.