

Datasheet for ABIN320971
anti-CPS1 antibody (AA 151-200)

2 Images

[Go to Product page](#)

Overview

Quantity:	100 µL
Target:	CPS1
Binding Specificity:	AA 151-200
Reactivity:	Human, Guinea Pig
Host:	Rabbit
Clonality:	Polyclonal
Conjugate:	This CPS1 antibody is un-conjugated
Application:	Western Blotting (WB), Immunohistochemistry (IHC), Immunohistochemistry (Paraffin-embedded Sections) (IHC (p))

Product Details

Immunogen:	Synthetic peptide located between aa151-200 of human CPS1 (P31327, NP_001866). Percent identity by BLAST analysis: Human, Chimpanzee, Gibbon, Monkey, Galago (100%), Marmoset, Mouse, Rat, Elephant, Panda, Dog, Bovine, Pig, Opossum, Zebra finch (92%), Guinea pig (85%). Type of Immunogen: Synthetic peptide
Isotype:	IgG
Specificity:	Human CPS1
Predicted Reactivity:	Percent identity by BLAST analysis: Human (100%) Mouse, Rat, Dog, Bovine, Pig (92%) Guinea pig (85%).
Purification:	Protein A purified

Target Details

Target:	CPS1
Alternative Name:	CPS1 (CPS1 Products)
Background:	Name/Gene ID: CPS1 Synonyms: CPS1, Carbamoyl-phosphate synthase, CPSase I, CPSASE1
Gene ID:	1373
NCBI Accession:	NP_001866
UniProt:	P31327
Pathways:	Response to Growth Hormone Stimulus , Cellular Glucan Metabolic Process

Application Details

Application Notes:	Approved: IHC, IHC-P, WB Usage: ELISA titer using peptide based assay: 1:1562500. Western Blot: Suggested dilution at 1.25 µg/mL in 5 % skim milk / PBS buffer, and HRP conjugated anti-Rabbit IgG should be diluted in 1:50000 - 100000 as second antibody.
Comment:	Target Species of Antibody: Human
Restrictions:	For Research Use only

Handling

Format:	Lyophilized
Reconstitution:	Distilled Water.
Concentration:	Lot specific
Buffer:	Lyophilized from PBS with 2 % sucrose
Handling Advice:	Avoid repeat freeze-thaw cycles.
Storage:	4 °C,-20 °C
Storage Comment:	Long term: -20°C, the use of 50% glycerol is recommended if storing aliquots in -20°C for long term use (up to 1 year) Short term (less than 1 week): 4°C. Avoid freeze-thaw cycles.

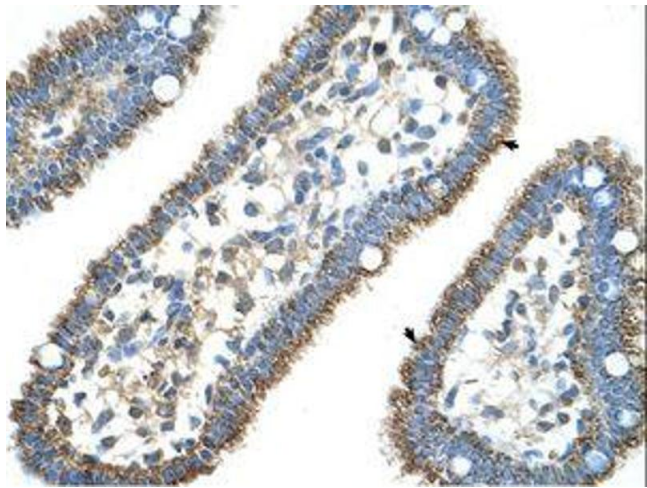


Image 1.



Image 2.