

Datasheet for ABIN320972
anti-CPS1 antibody (AA 951-1000)[Go to Product page](#)

2 Images

Overview

Quantity:	100 µL
Target:	CPS1
Binding Specificity:	AA 951-1000
Reactivity:	Human, Rat, Mouse, Guinea Pig, Pig
Host:	Rabbit
Clonality:	Polyclonal
Conjugate:	This CPS1 antibody is un-conjugated
Application:	Western Blotting (WB), Immunohistochemistry (IHC), Immunohistochemistry (Paraffin-embedded Sections) (IHC (p))

Product Details

Immunogen:	Synthetic peptide located between aa951-1000 of human CPS1 (P31327, NP_001866). Percent identity by BLAST analysis: Human, Chimpanzee (100%), Gibbon, Monkey, Galago, Elephant, Dog, Bovine, Horse, Opossum, Turkey, Zebra finch, Platypus (92%), Marmoset, Panda, Bat, Pig, Guinea pig, Frog (85%), Chicken (84%), Drosophila (81%), Mouse, Rat (78%). Type of Immunogen: Synthetic peptide
Isotype:	IgG
Specificity:	Human CPS1
Predicted Reactivity:	Percent identity by BLAST analysis: Human (100%) Dog, Bovine, Horse (92%) Pig, Guinea pig (85%) Chicken (84%).

Product Details

Purification: Protein A purified

Target Details

Target: CPS1

Alternative Name: CPS1 ([CPS1 Products](#))

Background: Name/Gene ID: CPS1

Synonyms: CPS1, Carbamoyl-phosphate synthase, CPSase I, CPSASE1

Gene ID: 1373

NCBI Accession: [NP_001866](#)

UniProt: [P31327](#)

Pathways: [Response to Growth Hormone Stimulus](#), [Cellular Glucan Metabolic Process](#)

Application Details

Application Notes: Approved: IHC, IHC-P, WB

Usage: ELISA titer using peptide based assay: 1:312500. Western Blot: Suggested dilution at 5.0 µg/mL in 5 % skim milk / PBS buffer, and HRP conjugated anti-Rabbit IgG should be diluted in 1:50000 - 100000 as second antibody.

Comment: Target Species of Antibody: Human

Restrictions: For Research Use only

Handling

Format: Lyophilized

Reconstitution: Distilled Water.

Concentration: Lot specific

Buffer: Lyophilized from PBS with 2 % sucrose

Handling Advice: Avoid repeat freeze-thaw cycles.

Storage: 4 °C, -20 °C

Storage Comment: Long term: -20°C, the use of 50% glycerol is recommended if storing aliquots in -20°C for long

Handling

term use (up to 1 year)

Short term (less than 1 week): 4°C. Avoid freeze-thaw cycles.

Images

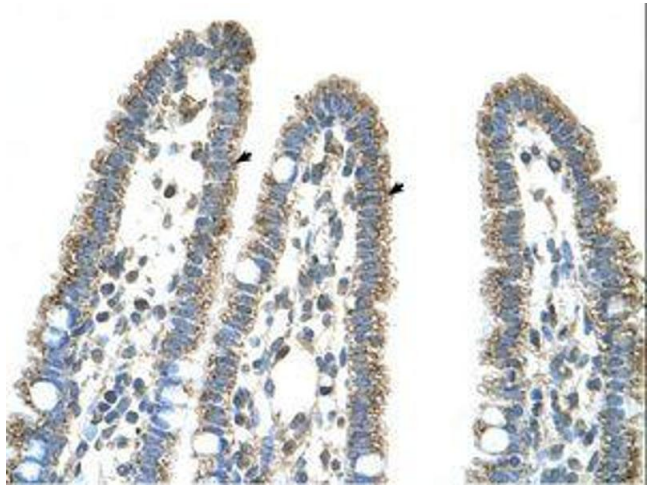


Image 1.

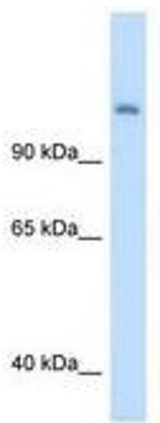


Image 2.