

Datasheet for ABIN320982

anti-CBS antibody (AA 164-213)



[Go to Product page](#)

2 Images

Overview

Quantity:	100 µL
Target:	CBS
Binding Specificity:	AA 164-213
Reactivity:	Human, Mouse, Rat, Dog, Rabbit, Cow, Guinea Pig, Horse, Bat, Hamster, Xenopus laevis
Host:	Rabbit
Clonality:	Polyclonal
Conjugate:	This CBS antibody is un-conjugated
Application:	Western Blotting (WB), Immunohistochemistry (IHC), Immunohistochemistry (Paraffin-embedded Sections) (IHC (p))

Product Details

Immunogen:	Synthetic peptide located between aa164-213 of human CBS (P35520, NP_000062). Percent identity by BLAST analysis: Human, Chimpanzee, Gorilla, Gibbon, Monkey, Galago, Mouse, Rat, Hamster, Elephant, Dog, Bovine, Bat, Rabbit, Horse, Opossum, Guinea pig, Lizard, Xenopus (100%), Marmoset, Turkey, Zebra finch, Chicken, Trout, Stickleback, Zebrafish (92%), Platypus, Sea squirt (85%). Type of Immunogen: Synthetic peptide
Isotype:	IgG
Specificity:	Human CBS
Predicted Reactivity:	Percent identity by BLAST analysis: Human, Mouse, Rat, Dog, Bovine, Rabbit, Guinea pig (100%)

Product Details

Chicken, Xenopus, Zebrafish (92%).

Purification: Protein A purified

Target Details

Target: CBS

Alternative Name: CBS ([CBS Products](#))

Background: Name/Gene ID: CBS

Synonyms: CBS, Beta-thionase, Cystathionine beta-synthase, HIP4, Methylcysteine synthase, Serine sulfhydrase, Cystathionine-beta-synthase

Gene ID: 875

NCBI Accession: [NP_000062](#)

UniProt: [P35520](#)

Application Details

Application Notes: Approved: IHC, IHC-P, WB

Usage: ELISA titer using peptide based assay: 1:62500. Western Blot: Suggested dilution at 1.25 µg/mL in 5 % skim milk / PBS buffer, and HRP conjugated anti-Rabbit IgG should be diluted in 1:50000 - 100000 as second antibody.

Comment: Target Species of Antibody: Human

Restrictions: For Research Use only

Handling

Format: Lyophilized

Reconstitution: Distilled Water.

Concentration: Lot specific

Buffer: Lyophilized from PBS with 2 % sucrose

Handling Advice: Avoid repeat freeze-thaw cycles.

Storage: 4 °C,-20 °C

Handling

Storage Comment: Long term: -20°C, the use of 50% glycerol is recommended if storing aliquots in -20°C for long term use (up to 1 year)

Short term (less than 1 week): 4°C. Avoid freeze-thaw cycles.

Images

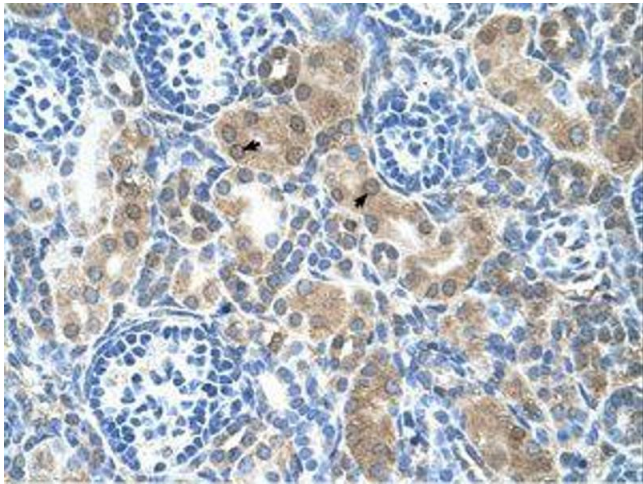


Image 1.

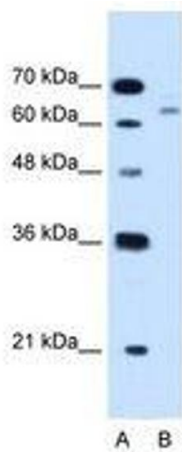


Image 2.