



[Go to Product page](#)

## Datasheet for ABIN320990 **anti-PFKL antibody (AA 442-491)**

### 1 Image

#### Overview

Quantity:	100 µL
Target:	PFKL
Binding Specificity:	AA 442-491
Reactivity:	Human, Mouse, Rat, Cow, Dog, Guinea Pig, Horse, Bat, Chicken, Monkey
Host:	Rabbit
Clonality:	Polyclonal
Conjugate:	This PFKL antibody is un-conjugated
Application:	Western Blotting (WB)

#### Product Details

Immunogen:	Synthetic peptide located between aa442-491 of human PFKL (Q7L2M7). Percent identity by BLAST analysis: Human, Chimpanzee, Gorilla, Orangutan, Gibbon, Monkey, Galago, Marmoset, Mouse, Rat, Elephant, Panda, Dog, Bovine, Bat, Horse, Guinea pig, Turkey, Chicken, Platypus (100%), Lizard, Zebrafish (92%), Hamster, Rabbit, Xenopus, Seabass, Salmon, Stickleback, Drosophila, Nematode (85%).  Type of Immunogen: Synthetic peptide
Isotype:	IgG
Specificity:	Human PFKL
Predicted Reactivity:	Percent identity by BLAST analysis: Human, Mouse, Rat, Dog, Guinea pig, Chicken (100%).
Purification:	Protein A purified

## Target Details

---

Target:	PFKL
Alternative Name:	PFKL ( <a href="#">PFKL Products</a> )
Background:	Name/Gene ID: PFKL  Synonyms: PFKL, Phosphofructokinase 1, Phosphofructokinase, liver, PFK-B, Phosphohexokinase
Gene ID:	5211
UniProt:	<a href="#">P17858</a>
Pathways:	<a href="#">Negative Regulation of Hormone Secretion, Warburg Effect</a>

## Application Details

---

Application Notes:	Approved: WB  Usage: ELISA titer using peptide based assay: 1:312500. Western Blot: Suggested dilution at 2.5 µg/mL in 5 % skim milk / PBS buffer, and HRP conjugated anti-Rabbit IgG should be diluted in 1:50000 - 100000 as second antibody.
Comment:	Target Species of Antibody: Human
Restrictions:	For Research Use only

## Handling

---

Format:	Lyophilized
Reconstitution:	Distilled Water.
Concentration:	Lot specific
Buffer:	Lyophilized from PBS with 2 % sucrose
Handling Advice:	Avoid repeat freeze-thaw cycles.
Storage:	4 °C,-20 °C
Storage Comment:	Long term: -20°C, the use of 50% glycerol is recommended if storing aliquots in -20°C for long term use (up to 1 year)  Short term (less than 1 week): 4°C. Avoid freeze-thaw cycles.

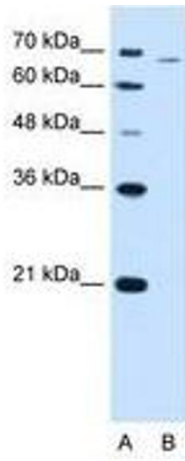


Image 1.