



Datasheet for ABIN320992
anti-COL6A2 antibody (AA 852-901)



[Go to Product page](#)

1 Image

Overview

Quantity:	100 µL
Target:	COL6A2
Binding Specificity:	AA 852-901
Reactivity:	Human, Monkey, Horse
Host:	Rabbit
Clonality:	Polyclonal
Conjugate:	This COL6A2 antibody is un-conjugated
Application:	Western Blotting (WB)

Product Details

Immunogen:	Synthetic peptide located between aa852-901 of human COL6A2 (P12110). Percent identity by BLAST analysis: Human, Chimpanzee, Gorilla, Gibbon, Monkey, Marmoset, Panda (100%), Pig (92%), Galago, Bat, Horse (85%). Type of Immunogen: Synthetic peptide
Isotype:	IgG
Specificity:	Human COL6A2
Predicted Reactivity:	Percent identity by BLAST analysis: Human (100%) Pig (92%) Horse (85%).
Purification:	Protein A purified

Target Details

Target:	COL6A2
Alternative Name:	COL6A2 / Collagen VI Alpha 2 (COL6A2 Products)
Background:	Name/Gene ID: COL6A2 Family: Collagen Synonyms: COL6A2, Collagen alpha-2(VI) chain, Collagen, type VI, alpha 2, Collagen alpha 2(vi), PP3610
Gene ID:	1292
UniProt:	P12110

Application Details

Application Notes:	Approved: WB Usage: ELISA titer using peptide based assay: 1:312500. Western Blot: Suggested dilution at 1.25 µg/mL in 5 % skim milk / PBS buffer, and HRP conjugated anti-Rabbit IgG should be diluted in 1:50000 - 100000 as second antibody.
Comment:	Target Species of Antibody: Human
Restrictions:	For Research Use only

Handling

Format:	Lyophilized
Reconstitution:	Distilled Water.
Concentration:	Lot specific
Buffer:	Lyophilized from PBS with 2 % sucrose
Handling Advice:	Avoid repeat freeze-thaw cycles.
Storage:	4 °C,-20 °C
Storage Comment:	Long term: -20°C, the use of 50% glycerol is recommended if storing aliquots in -20°C for long term use (up to 1 year) Short term (less than 1 week): 4°C. Avoid freeze-thaw cycles.

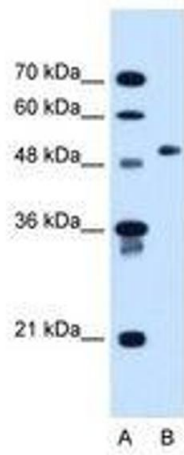


Image 1.