

Datasheet for ABIN3210016

**anti-SARS-Coronavirus Membrane Protein (SARS-CoV M)
antibody**[Go to Product page](#)**1** Image

Overview

Quantity:	100 µL
Target:	SARS-Coronavirus Membrane Protein (SARS-CoV M)
Reactivity:	Human
Host:	Mouse
Clonality:	Monoclonal
Conjugate:	Un-conjugated
Application:	ELISA, Western Blotting (WB)

Product Details

Immunogen:	SARS M antibody was raised in Mouse using a purified recombinant fragment of SARS-m protein expressed in E. coli as the immunogen.
Clone:	2H2C4
Isotype:	IgG1

Target Details

Target:	SARS-Coronavirus Membrane Protein (SARS-CoV M)
Alternative Name:	SARS M (SARS-CoV M Products)
Target Type:	Viral Protein
Background:	SARS is caused by a human coronavirus. Human coronaviruses are the major cause of upper respiratory tract illness, such as the common cold, in humans. Coronaviruses are positive-stranded RNA viruses, featuring the largest viral RNA genomes known to date (27-31 kb). The

Target Details

complete sequence of the SARS virus release the coronavirus contains 25 open reading frames. SARS-M is a membrane protein which plays a the key player in virion assembly. One of its functions is to mediate the incorporation of the spikes into the viral envelope. Synonyms: Monoclonal SARS M antibody, Anti-SARS M antibody, SARS-M antibody, Severe Acute Respiratory Syndrome M antibody.

Application Details

Application Notes: ELISA: 1:10,000, WB: 1:500-1:2000
Optimal conditions should be determined by the investigator.

Restrictions: For Research Use only

Handling

Format: Liquid

Concentration: Lot specific

Buffer: Supplied as a liquid in ascitic fluid containing 0.03 % sodium azide.

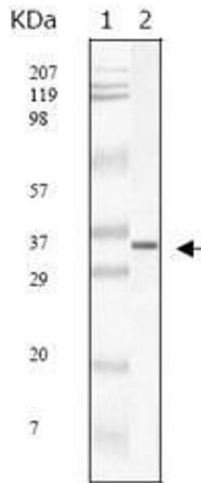
Preservative: Sodium azide

Precaution of Use: This product contains Sodium Azide: a POISONOUS AND HAZARDOUS SUBSTANCE, which should be handled by trained staff only.

Handling Advice: Avoid repeated freeze/thaw cycles.
Dilute only prior to immediate use.

Storage: 4 °C/-20 °C

Storage Comment: Store at 4 °C for short term storage. Store at -20 °C for long term storage.



Western Blotting

Image 1. Western Blot showing SARS-mpm antibody used against SARS-mpm recombinant protein.