



[Go to Product page](#)

Datasheet for ABIN321002
anti-TCP10 antibody (AA 109-158)

2 Images

Overview

Quantity:	100 µL
Target:	TCP10
Binding Specificity:	AA 109-158
Reactivity:	Human
Host:	Rabbit
Clonality:	Polyclonal
Conjugate:	This TCP10 antibody is un-conjugated
Application:	Western Blotting (WB), Immunohistochemistry (IHC), Immunohistochemistry (Paraffin-embedded Sections) (IHC (p))

Product Details

Immunogen:	Synthetic peptide located between aa109-158 of human TCP10L (Q8TDR4, NP_653260). Percent identity by BLAST analysis: Human (100%), Chimpanzee (85%). Type of Immunogen: Synthetic peptide
Isotype:	IgG
Specificity:	Human TCP10
Predicted Reactivity:	Percent identity by BLAST analysis:
Purification:	Protein A purified

Target Details

Target:	TCP10
Alternative Name:	TCP10 (TCP10 Products)
Background:	Name/Gene ID: TCP10 Synonyms: TCP10, T-complex 10, T-complex 10 (mouse), T-complex 10 homolog (mouse), T-complex protein 10A homolog, TCP10A
Gene ID:	6953
NCBI Accession:	NP_653260
UniProt:	Q12799

Application Details

Application Notes:	Approved: IHC, IHC-P, WB Usage: ELISA titer using peptide based assay: 1:62500. Western Blot: Suggested dilution at 1.25 µg/mL in 5 % skim milk / PBS buffer, and HRP conjugated anti-Rabbit IgG should be diluted in 1:50000 - 100000 as second antibody.
Comment:	Target Species of Antibody: Human
Restrictions:	For Research Use only

Handling

Format:	Lyophilized
Reconstitution:	Distilled Water.
Concentration:	Lot specific
Buffer:	Lyophilized from PBS with 2 % sucrose
Handling Advice:	Avoid repeat freeze-thaw cycles.
Storage:	4 °C,-20 °C
Storage Comment:	Long term: -20°C, the use of 50% glycerol is recommended if storing aliquots in -20°C for long term use (up to 1 year) Short term (less than 1 week): 4°C. Avoid freeze-thaw cycles.

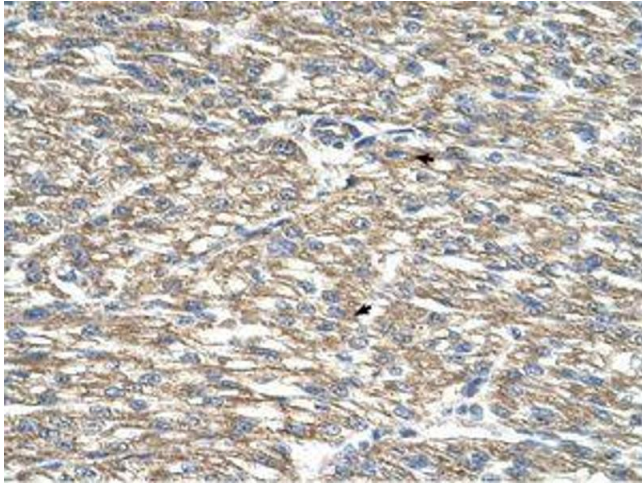


Image 1.

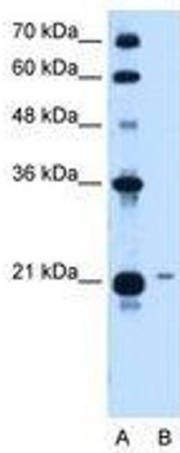


Image 2.