



[Go to Product page](#)

Datasheet for ABIN321026

## anti-Adenylate Kinase 2 antibody (N-Term)

### 1 Image

#### Overview

|                      |   |
|----------------------|---|
| Quantity:            | 100 µL  |
| Target:              | Adenylate Kinase 2 (AK2)                          |
| Binding Specificity: | N-Term  |
| Reactivity:          | Human, Guinea Pig, Rabbit                         |
| Host:                | Rabbit  |
| Clonality:           | Polyclonal  |
| Conjugate:           | This Adenylate Kinase 2 antibody is un-conjugated |
| Application:         | Western Blotting (WB)                             |

#### Product Details

|                       |   |
|-----------------------|---|
| Immunogen:            | Synthetic peptide from N-Terminus of human AK2 (P54819, NP_001616). Percent identity by BLAST analysis: Human, Chimpanzee, Gorilla, Orangutan, Gibbon, Monkey, Rabbit, Guinea pig, Salmon, Stickleback (100%), Galago, Marmoset, Mouse, Rat, Elephant, Dog, Horse, Opossum, Chicken, Xenopus, Catfish, Zebrafish, Sea squirt, Penicillium (92%), Bovine, Bat (85%).<br><br>Type of Immunogen: Synthetic peptide |
| Isotype:              | IgG   |
| Specificity:          | Human AK2   |
| Predicted Reactivity: | Percent identity by BLAST analysis: Human (100%) Mouse, Dog, Chicken (92%).   |
| Purification:         | Protein A purified  |

## Target Details

---

|                   |  |
|-------------------|--|
| Target:           | Adenylate Kinase 2 (AK2)   |
| Alternative Name: | AK2 / Adenylate Kinase 2 ( <a href="#">AK2 Products</a> )  |
| Background:       | Name/Gene ID: AK2<br><br>Synonyms: AK2, Adenylate kinase 2, ADK2, AK 2, ATP-AMP transphosphorylase 2 |
| Gene ID:          | 204  |
| NCBI Accession:   | <a href="#">NP_001616</a>  |
| UniProt:          | <a href="#">P54819</a>   |
| Pathways:         | <a href="#">Nucleotide Phosphorylation</a> , <a href="#">Ribonucleoside Biosynthetic Process</a>     |

## Application Details

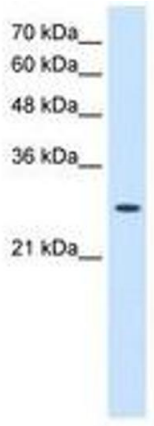
---

|                    |  |
|--------------------|--|
| Application Notes: | Approved: WB<br><br>Usage: ELISA titer using peptide based assay: 1:62500. Western Blot: Suggested dilution at 2.5 µg/mL in 5 % skim milk / PBS buffer, and HRP conjugated anti-Rabbit IgG should be diluted in 1:50000 - 100000 as second antibody. |
| Comment:           | Target Species of Antibody: Human  |
| Restrictions:      | For Research Use only  |

## Handling

---

|                  |   |
|------------------|---|
| Format:          | Lyophilized   |
| Reconstitution:  | Distilled Water.  |
| Concentration:   | Lot specific  |
| Buffer:          | Lyophilized from PBS with 2 % sucrose   |
| Handling Advice: | Avoid repeat freeze-thaw cycles.  |
| Storage:         | 4 °C,-20 °C   |
| Storage Comment: | Long term: -20°C, the use of 50% glycerol is recommended if storing aliquots in -20°C for long term use (up to 1 year)<br><br>Short term (less than 1 week): 4°C. Avoid freeze-thaw cycles. |



**Image 1.**