

Datasheet for ABIN321030
anti-CTP Synthase antibody (AA 156-205)[Go to Product page](#)

2 Images

Overview

Quantity:	100 µL
Target:	CTP Synthase (CTPS)
Binding Specificity:	AA 156-205
Reactivity:	Human, Mouse, Rat, Cow, Dog, Guinea Pig, Horse, Rabbit, Chicken, Bat, Hamster, Monkey, Pig
Host:	Rabbit
Clonality:	Polyclonal
Conjugate:	This CTP Synthase antibody is un-conjugated
Application:	Western Blotting (WB), Immunohistochemistry (IHC), Immunohistochemistry (Paraffin-embedded Sections) (IHC (p))

Product Details

Immunogen:	Synthetic peptide located between aa156-205 of human CTPS1 (P17812, NP_001896). Percent identity by BLAST analysis: Human, Chimpanzee, Gorilla, Gibbon, Monkey, Galago, Marmoset, Mouse, Rat, Hamster, Panda, Dog, Bovine, Bat, Rabbit, Horse, Pig, Opossum, Guinea pig, Turkey, Zebra finch, Chicken, Platypus (100%), Elephant, Xenopus, Salmon, Zebrafish (92%), Lizard, Sea squirt (85%). Type of Immunogen: Synthetic peptide
Isotype:	IgG
Specificity:	Human CTPS
Predicted Reactivity:	Percent identity by BLAST analysis: Human, Mouse, Rat, Dog, Bovine, Rabbit, Guinea pig,

Product Details

Chicken (100%) Horse, Pig, Zebrafish (92%).

Purification: Protein A purified

Target Details

Target: CTP Synthase (CTPS)

Alternative Name: CTPS ([CTPS Products](#))

Background: Name/Gene ID: CTPS1

Synonyms: CTPS1, CTP synthase, CTP synthetase 1, CTP synthase 1, CTPS, UTP--ammonia ligase 1

Gene ID: 1503

NCBI Accession: [NP_001896](#)

UniProt: [P17812](#)

Pathways: [Proton Transport](#), [Ribonucleoside Biosynthetic Process](#)

Application Details

Application Notes: Approved: IHC, IHC-P, WB

Usage: ELISA titer using peptide based assay: 1:312500. Western Blot: Suggested dilution at 5.0 µg/mL in 5 % skim milk / PBS buffer, and HRP conjugated anti-Rabbit IgG should be diluted in 1:50000 - 100000 as second antibody.

Comment: Target Species of Antibody: Human

Restrictions: For Research Use only

Handling

Format: Lyophilized

Reconstitution: Distilled Water.

Concentration: Lot specific

Buffer: Lyophilized from PBS with 2 % sucrose

Handling Advice: Avoid repeat freeze-thaw cycles.

Handling

Storage:	4 °C,-20 °C
Storage Comment:	Long term: -20°C, the use of 50% glycerol is recommended if storing aliquots in -20°C for long term use (up to 1 year) Short term (less than 1 week): 4°C. Avoid freeze-thaw cycles.

Images

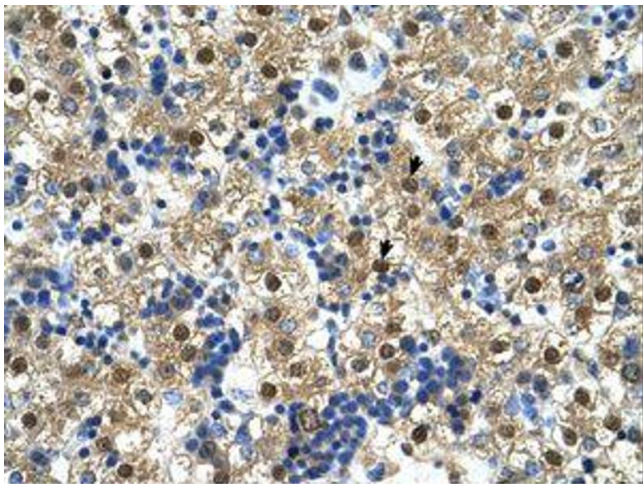


Image 1.

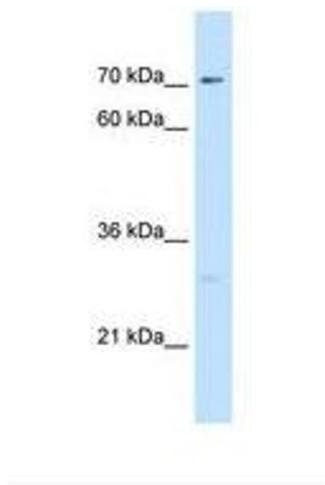


Image 2.