



[Go to Product page](#)

Datasheet for ABIN321031

anti-CTP Synthase antibody (C-Term)

1 Image

Overview

Quantity:	100 µL
Target:	CTP Synthase (CTPS)
Binding Specificity:	C-Term
Reactivity:	Human, Mouse, Rat, Cow, Dog, Guinea Pig, Horse, Rabbit, Chicken, Bat, Hamster, Monkey, Pig
Host:	Rabbit
Clonality:	Polyclonal
Conjugate:	This CTP Synthase antibody is un-conjugated
Application:	Western Blotting (WB)

Product Details

Immunogen:	Synthetic peptide from C-Terminus of human CTPS1 (P17812, NP_001896). Percent identity by BLAST analysis: Human, Chimpanzee, Gorilla, Gibbon, Monkey, Marmoset, Mouse, Rat, Hamster, Panda, Dog, Bovine, Bat, Rabbit, Horse, Pig, Opossum, Guinea pig, Turkey, Zebra finch, Chicken, Platypus, Salmon (100%), Zebrafish (92%), Xenopus (85%). Type of Immunogen: Synthetic peptide
Isotype:	IgG
Specificity:	Human CTPS
Predicted Reactivity:	Percent identity by BLAST analysis: Human, Mouse, Rat, Dog, Bovine, Rabbit, Guinea pig, Chicken (100%) Zebrafish (92%).
Purification:	Protein A purified

Target Details

Target:	CTP Synthase (CTPS)
Alternative Name:	CTPS (CTPS Products)
Background:	Name/Gene ID: CTPS1 Synonyms: CTPS1, CTP synthase, CTP synthetase 1, CTP synthase 1, CTPS, UTP--ammonia ligase 1
Gene ID:	1503
NCBI Accession:	NP_001896
UniProt:	P17812
Pathways:	Proton Transport, Ribonucleoside Biosynthetic Process

Application Details

Application Notes:	Approved: WB Usage: ELISA titer using peptide based assay: 1:62500. Western Blot: Suggested dilution at 5.0 µg/mL in 5 % skim milk / PBS buffer, and HRP conjugated anti-Rabbit IgG should be diluted in 1:50000 - 100000 as second antibody.
Comment:	Target Species of Antibody: Human
Restrictions:	For Research Use only

Handling

Format:	Lyophilized
Reconstitution:	Distilled Water.
Concentration:	Lot specific
Buffer:	Lyophilized from PBS with 2 % sucrose
Handling Advice:	Avoid repeat freeze-thaw cycles.
Storage:	4 °C, -20 °C
Storage Comment:	Long term: -20°C, the use of 50% glycerol is recommended if storing aliquots in -20°C for long term use (up to 1 year) Short term (less than 1 week): 4°C. Avoid freeze-thaw cycles.

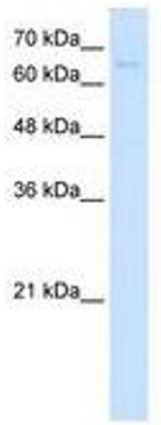


Image 1.