



[Go to Product page](#)

Datasheet for ABIN321051  
**anti-MAGEA1 antibody (AA 201-250)**

1 Image

Overview

Quantity:	100 µL
Target:	MAGEA1
Binding Specificity:	AA 201-250
Reactivity:	Human, Monkey
Host:	Rabbit
Clonality:	Polyclonal
Conjugate:	This MAGEA1 antibody is un-conjugated
Application:	Western Blotting (WB)

Product Details

Immunogen:	Synthetic peptide located between aa201-250 of human MAGEA1 (P43355, NP_004979). Percent identity by BLAST analysis: Human, Gibbon, Monkey (100%), Gorilla (92%), Marmoset (84%).  Type of Immunogen: Synthetic peptide
Isotype:	IgG
Specificity:	Human MAGEA1 / MAGE 1
Predicted Reactivity:	Percent identity by BLAST analysis: Human (84%).
Purification:	Protein A purified

## Target Details

---

Target:	MAGEA1
Alternative Name:	MAGEA1 / MAGE 1 ( <a href="#">MAGEA1 Products</a> )
Background:	Name/Gene ID: MAGEA1  Synonyms: MAGEA1, Antigen MZ2-E, Cancer/testis antigen 1.1, CT1.1, MAGE-1 antigen, MAGE1A, Melanoma antigen family A 1, Melanoma antigen MAGE-1, MAGE 1, MAGE1, Melanoma-associated antigen 1
Gene ID:	4100
NCBI Accession:	<a href="#">NP_004979</a>
UniProt:	<a href="#">P43355</a>

## Application Details

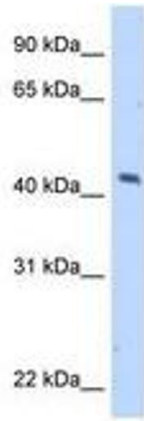
---

Application Notes:	Approved: WB  Usage: ELISA titer using peptide based assay: 1:312500. Western Blot: Suggested dilution at 5.0 µg/mL in 5 % skim milk / PBS buffer, and HRP conjugated anti-Rabbit IgG should be diluted in 1:50000 - 100000 as second antibody.
Comment:	Target Species of Antibody: Human
Restrictions:	For Research Use only

## Handling

---

Format:	Lyophilized
Reconstitution:	Distilled Water.
Concentration:	Lot specific
Buffer:	Lyophilized from PBS with 2 % sucrose
Handling Advice:	Avoid repeat freeze-thaw cycles.
Storage:	4 °C,-20 °C
Storage Comment:	Long term: -20°C, the use of 50% glycerol is recommended if storing aliquots in -20°C for long term use (up to 1 year)  Short term (less than 1 week): 4°C. Avoid freeze-thaw cycles.



**Image 1.**