



[Go to Product page](#)

Datasheet for ABIN321055  
**anti-SHMT2 antibody (AA 72-121)**

2 Images

Overview

Quantity:	100 µL
Target:	SHMT2
Binding Specificity:	AA 72-121
Reactivity:	Human, Mouse, Rat, Dog, Guinea Pig, Horse, Rabbit, Cow, Zebrafish (Danio rerio), Bat, Hamster, Monkey, Pig, Xenopus laevis
Host:	Rabbit
Clonality:	Polyclonal
Conjugate:	This SHMT2 antibody is un-conjugated
Application:	Western Blotting (WB), Immunohistochemistry (IHC), Immunohistochemistry (Paraffin-embedded Sections) (IHC (p))

Product Details

Immunogen:	Synthetic peptide located between aa72-121 of human SHMT2 (P34897, NP_005403). Percent identity by BLAST analysis: Human, Gorilla, Gibbon, Monkey, Mouse, Rat, Hamster, Elephant, Panda, Dog, Bovine, Bat, Rabbit, Horse, Pig, Guinea pig, Xenopus (100%), Galago, Seabass, Salmon, Drosophila (92%), Slime mold (85%).  Type of Immunogen: Synthetic peptide
Isotype:	IgG
Specificity:	Human SHMT2
Predicted Reactivity:	Percent identity by BLAST analysis: Human, Mouse, Rat, Dog, Horse, Xenopus, Zebrafish

## Product Details

---

(100%).

Purification: Protein A purified

## Target Details

---

Target: SHMT2

Alternative Name: SHMT / SHMT2 ([SHMT2 Products](#))

Background: Name/Gene ID: SHMT2

Synonyms: SHMT2, GLY A+, GLYA, Hydroxymethyltransferase 2, Serine methylase, Serine aldolase, SHMT, Threonine aldolase, Serine hydroxymethylase

Gene ID: 6472

NCBI Accession: [NP\\_005403](#)

UniProt: [P34897](#)

## Application Details

---

Application Notes: Approved: IHC, IHC-P, WB

Usage: ELISA titer using peptide based assay: 1:1562500. Western Blot: Suggested dilution at 2.5 µg/mL in 5 % skim milk / PBS buffer, and HRP conjugated anti-Rabbit IgG should be diluted in 1:50000 - 100000 as second antibody.

Comment: Target Species of Antibody: Human

Restrictions: For Research Use only

## Handling

---

Format: Lyophilized

Reconstitution: Distilled Water.

Concentration: Lot specific

Buffer: Lyophilized from PBS with 2 % sucrose

Handling Advice: Avoid repeat freeze-thaw cycles.

Storage: 4 °C,-20 °C

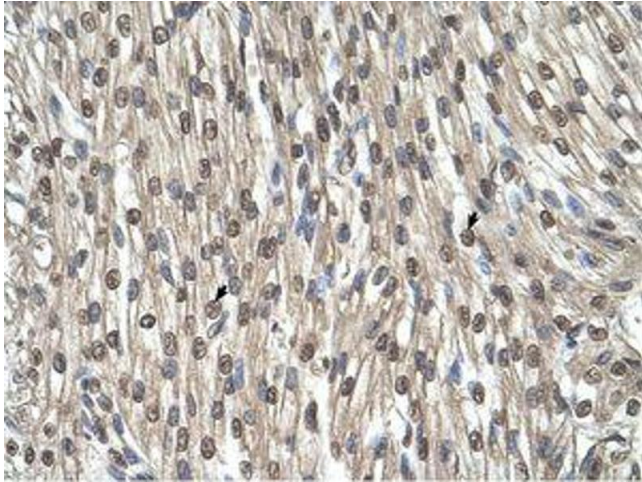
## Handling

---

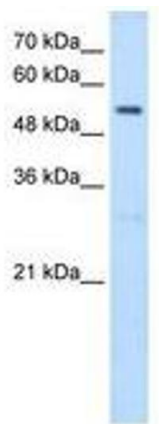
Storage Comment: Long term: -20°C, the use of 50% glycerol is recommended if storing aliquots in -20°C for long term use (up to 1 year)  
Short term (less than 1 week): 4°C. Avoid freeze-thaw cycles.

## Images

---



**Image 1.**



**Image 2.**