

Datasheet for ABIN321197
anti-TOR1B antibody (AA 251-300)[Go to Product page](#)

1 Image

Overview

Quantity:	100 µL
Target:	TOR1B
Binding Specificity:	AA 251-300
Reactivity:	Human, Mouse, Rat, Horse, Rabbit, Monkey, Pig
Host:	Rabbit
Clonality:	Polyclonal
Conjugate:	This TOR1B antibody is un-conjugated
Application:	Western Blotting (WB)

Product Details

Immunogen:	Synthetic peptide located between aa251-300 of human TOR1B (O14657, NP_055321). Percent identity by BLAST analysis: Human, Chimpanzee, Gorilla, Gibbon, Monkey, Marmoset, Mouse, Rat (100%), Galago, Elephant, Panda, Dog, Bovine (92%), Bat, Horse, Guinea pig, Zebra finch, Platypus, Xenopus (85%), Rabbit (84%), Chicken (81%). Type of Immunogen: Synthetic peptide
Isotype:	IgG
Specificity:	Human TOR1B / Torsin B
Predicted Reactivity:	Percent identity by BLAST analysis: Human, Mouse, Rat (100%) Dog, Bovine (92%) Horse (85%) Rabbit (84%).
Purification:	Protein A purified

Target Details

Target:	TOR1B
Alternative Name:	TOR1B / Torsin B (TOR1B Products)
Background:	Name/Gene ID: TOR1B Synonyms: TOR1B, DQ1, Torsin-1B, Torsin family 1 member B
Gene ID:	27348
NCBI Accession:	NP_055321
UniProt:	O14657

Application Details

Application Notes:	Approved: WB Usage: ELISA titer using peptide based assay: 1:312500. Western Blot: Suggested dilution at 5.0 µg/mL in 5 % skim milk / PBS buffer, and HRP conjugated anti-Rabbit IgG should be diluted in 1:50000 - 100000 as second antibody.
Comment:	Target Species of Antibody: Human
Restrictions:	For Research Use only

Handling

Format:	Lyophilized
Reconstitution:	Distilled Water.
Concentration:	Lot specific
Buffer:	Lyophilized from PBS with 2 % sucrose
Handling Advice:	Avoid repeat freeze-thaw cycles.
Storage:	4 °C, -20 °C
Storage Comment:	Long term: -20°C, the use of 50% glycerol is recommended if storing aliquots in -20°C for long term use (up to 1 year) Short term (less than 1 week): 4°C. Avoid freeze-thaw cycles.

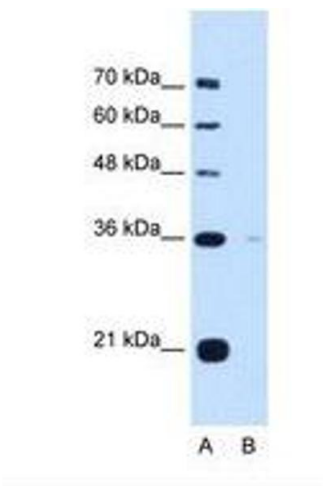


Image 1.