



Datasheet for ABIN321251  
**anti-PIGV antibody (AA 51-100)**



[Go to Product page](#)

2 Images

Overview

Quantity:	100 µL
Target:	PIGV
Binding Specificity:	AA 51-100
Reactivity:	Human, Dog, Mouse, Rat, Cow, Guinea Pig, Rabbit, Bat, Pig
Host:	Rabbit
Clonality:	Polyclonal
Conjugate:	This PIGV antibody is un-conjugated
Application:	Western Blotting (WB), Immunohistochemistry (IHC), Immunohistochemistry (Paraffin-embedded Sections) (IHC (p))

Product Details

Immunogen:	Synthetic peptide located between aa51-100 of human PIGV (Q9NUD9, NP_060307). Percent identity by BLAST analysis: Human, Chimpanzee, Gorilla, Gibbon, Monkey, Galago, Mouse, Rat, Elephant, Dog, Bovine, Bat, Rabbit, Pig, Guinea pig (100%), Marmoset, Opossum, Stickleback (92%), Zebrafish (85%), Xenopus (84%).  Type of Immunogen: Synthetic peptide
Isotype:	IgG
Specificity:	Human PIGV
Predicted Reactivity:	Percent identity by BLAST analysis: Human, Mouse, Rat, Dog, Bovine, Rabbit, Guinea pig (100%).
Purification:	Protein A purified

## Target Details

---

Target:	PIGV
Alternative Name:	PIGV ( <a href="#">PIGV Products</a> )
Background:	Name/Gene ID: PIGV  Synonyms: PIGV, GPI mannosyltransferase II, GPI-MT-II, HPMRS1, GPI mannosyltransferase 2, Ybr004c homolog, PIG-V
Gene ID:	55650
NCBI Accession:	<a href="#">NP_060307</a>
UniProt:	<a href="#">Q9NUD9</a>
Pathways:	<a href="#">Inositol Metabolic Process</a>

## Application Details

---

Application Notes:	Approved: IHC, IHC-P, WB  Usage: ELISA titer using peptide based assay: 1:312500. Western Blot: Suggested dilution at 1.0 µg/mL in 5 % skim milk / PBS buffer, and HRP conjugated anti-Rabbit IgG should be diluted in 1:50000 - 100000 as second antibody.
Comment:	Target Species of Antibody: Human
Restrictions:	For Research Use only

## Handling

---

Format:	Lyophilized
Reconstitution:	Distilled Water.
Concentration:	Lot specific
Buffer:	Lyophilized from PBS with 2 % sucrose
Handling Advice:	Avoid repeat freeze-thaw cycles.
Storage:	4 °C, -20 °C
Storage Comment:	Long term: -20°C, the use of 50% glycerol is recommended if storing aliquots in -20°C for long term use (up to 1 year)  Short term (less than 1 week): 4°C. Avoid freeze-thaw cycles.

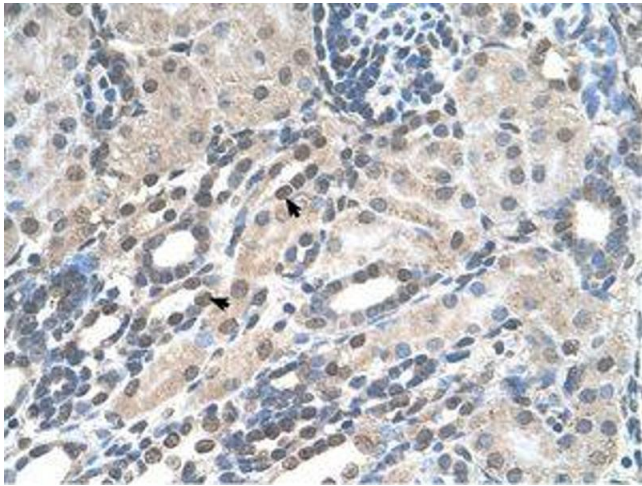


Image 1.

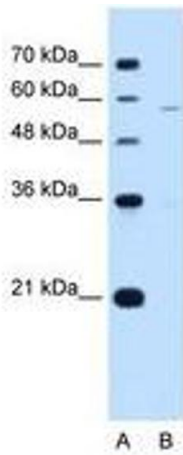


Image 2.