

Datasheet for ABIN321330  
**anti-SNX29 antibody (N-Term)**



[Go to Product page](#)

2 Images

## Overview

Quantity:	100 µL
Target:	SNX29 (RUNDC2A)
Binding Specificity:	N-Term
Reactivity:	Human, Mouse, Cow, Horse, Zebrafish (Danio rerio), Bat, Chicken, Pig
Host:	Rabbit
Clonality:	Polyclonal
Conjugate:	This SNX29 antibody is un-conjugated
Application:	Western Blotting (WB), Immunohistochemistry (IHC), Immunohistochemistry (Paraffin-embedded Sections) (IHC (p))

## Product Details

Immunogen:	Synthetic peptide from N-Terminus of human RUNDC2A (Q9HA26, NP_115543). Percent identity by BLAST analysis: Human, Chimpanzee, Gorilla, Mouse, Bovine, Bat, Horse, Pig, Opossum, Turkey, Zebra finch, Chicken, Platypus, Zebrafish (100%).  Type of Immunogen: Synthetic peptide
Isotype:	IgG
Specificity:	Human RUNDC2A
Predicted Reactivity:	Percent identity by BLAST analysis: Human, Bovine (100%) Pufferfish (92%).
Purification:	Protein A purified

## Target Details

---

Target:	SNX29 (RUNDC2A)
Alternative Name:	SNX29 / RUNDC2A ( <a href="#">RUNDC2A Products</a> )
Background:	Name/Gene ID: SNX29  Synonyms: SNX29, A-388D4.1, RUNDC2A, Sorting nexin 29, RUN domain containing 2A, Sorting nexin-29
Gene ID:	92017
NCBI Accession:	<a href="#">NP_115543</a>
UniProt:	<a href="#">Q9HA26</a>

## Application Details

---

Application Notes:	Approved: IHC, IHC-P, WB  Usage: ELISA titer using peptide based assay: 1:62500. Western Blot: Suggested dilution at 5.0 µg/mL in 5 % skim milk / PBS buffer, and HRP conjugated anti-Rabbit IgG should be diluted in 1:50000 - 100000 as second antibody.
Comment:	Target Species of Antibody: Human
Restrictions:	For Research Use only

## Handling

---

Format:	Lyophilized
Reconstitution:	Distilled Water.
Concentration:	Lot specific
Buffer:	Lyophilized from PBS with 2 % sucrose
Handling Advice:	Avoid repeat freeze-thaw cycles.
Storage:	4 °C,-20 °C
Storage Comment:	Long term: -20°C, the use of 50% glycerol is recommended if storing aliquots in -20°C for long term use (up to 1 year)  Short term (less than 1 week): 4°C. Avoid freeze-thaw cycles.

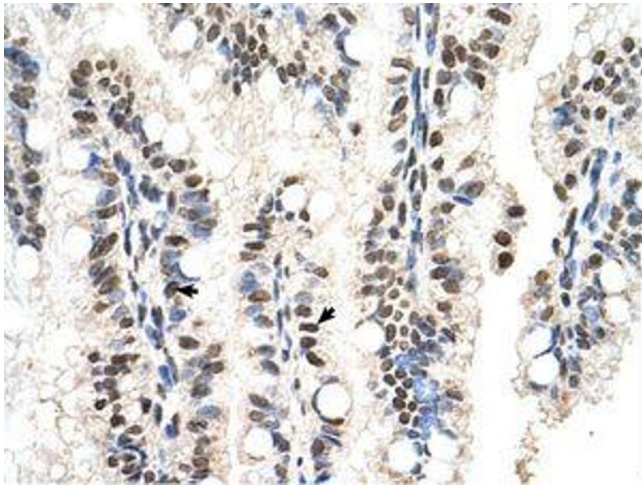


Image 1.

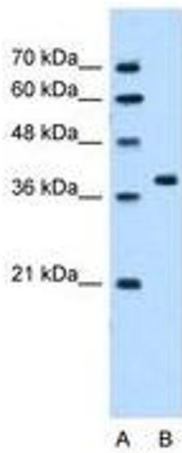


Image 2.