

Datasheet for ABIN321377
anti-PDHA1 antibody (N-Term)



[Go to Product page](#)

1 Image

Overview

Quantity:	100 µL
Target:	PDHA1
Binding Specificity:	N-Term
Reactivity:	Human, Mouse, Rat, Dog, Guinea Pig, Rabbit, Monkey, Bat
Host:	Rabbit
Clonality:	Polyclonal
Conjugate:	This PDHA1 antibody is un-conjugated
Application:	Western Blotting (WB)

Product Details

Immunogen:	Synthetic peptide from N-Terminus of human PDHA1 (P08559, NP_000275). Percent identity by BLAST analysis: Human, Chimpanzee, Gorilla, Orangutan, Gibbon, Monkey, Galago, Marmoset, Mouse, Rat, Elephant, Dog, Bat, Rabbit, Guinea pig (100%), Hamster, Bovine, Horse, Pig, Platypus (92%), Opossum (84%). Type of Immunogen: Synthetic peptide
Isotype:	IgG
Specificity:	Human PDHA1 / PDHA
Predicted Reactivity:	Percent identity by BLAST analysis: Human, Mouse, Rat, Dog, Rabbit, Guinea pig (100%) Bovine (92%).
Purification:	Protein A purified

Target Details

Target:	PDHA1
Alternative Name:	PDHA1 / PDH E1 alpha (PDHA1 Products)
Background:	Name/Gene ID: PDHA1 Synonyms: PDHA1, PDHCE1A, PDHA, PHE1A, PDHE1-A type I
Gene ID:	5160
NCBI Accession:	NP_000275
UniProt:	P08559
Pathways:	Warburg Effect

Application Details

Application Notes:	Approved: WB Usage: ELISA titer using peptide based assay: 1:312500. Western Blot: Suggested dilution at 5.0 µg/mL in 5 % skim milk / PBS buffer, and HRP conjugated anti-Rabbit IgG should be diluted in 1:50000 - 100000 as second antibody.
Comment:	Target Species of Antibody: Human
Restrictions:	For Research Use only

Handling

Format:	Lyophilized
Reconstitution:	Distilled Water.
Concentration:	Lot specific
Buffer:	Lyophilized from PBS with 2 % sucrose
Handling Advice:	Avoid repeat freeze-thaw cycles.
Storage:	4 °C,-20 °C
Storage Comment:	Long term: -20°C, the use of 50% glycerol is recommended if storing aliquots in -20°C for long term use (up to 1 year) Short term (less than 1 week): 4°C. Avoid freeze-thaw cycles.

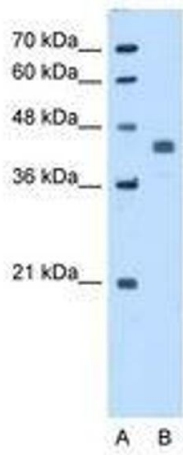


Image 1.