

Datasheet for ABIN321382
anti-PGK1 antibody (AA 301-350)

2 Images

[Go to Product page](#)

Overview

| | |
|----------------------|--|
| Quantity: | 100 µL |
| Target: | PGK1 |
| Binding Specificity: | AA 301-350 |
| Reactivity: | Human, Rat, Cow, Sheep, Dog, Rabbit, Monkey, Bat |
| Host: | Rabbit |
| Clonality: | Polyclonal |
| Conjugate: | This PGK1 antibody is un-conjugated |
| Application: | Western Blotting (WB), Immunohistochemistry (IHC), Immunohistochemistry (Paraffin-embedded Sections) (IHC (p)) |

Product Details

| | |
|-----------------------|---|
| Immunogen: | Synthetic peptide located between aa301-350 of human PGK1 (P00558, NP_000282). Percent identity by BLAST analysis: Human, Chimpanzee, Gorilla, Orangutan, Gibbon, Monkey, Galago, Marmoset, Rat, Sheep, Panda, Dog, Bovine, Bat, Rabbit, Opossum (100%), Mouse, Hamster, Elephant, Horse, Pig, Guinea pig, Platypus, Medaka, Zebrafish (92%), Salmon (84%). Type of Immunogen: Synthetic peptide |
| Isotype: | IgG |
| Specificity: | Human PGK1 |
| Predicted Reactivity: | Percent identity by BLAST analysis: Human, Sheep, Dog, Bovine (100%) Mouse, Rat, Horse, Pig, Guinea pig, Zebrafish (92%). |

Product Details

Purification: Protein A purified

Target Details

Target: PGK1

Alternative Name: PGK1/Phosphoglycerate Kinase 1 ([PGK1 Products](#))

Background: Name/Gene ID: PGK1
Subfamily: PGK
Family: Non-protein Kinase

Synonyms: PGK1, MIG10, Primer recognition protein 2, PRP 2, PGKA, Phosphoglycerate kinase 1

Gene ID: 5230

NCBI Accession: [NP_000282](#)

UniProt: [P00558](#)

Pathways: [Cellular Glucan Metabolic Process](#)

Application Details

Application Notes: Approved: IHC, IHC-P, WB

Usage: ELISA titer using peptide based assay: 1:1562500. Western Blot: Suggested dilution at 1.25 µg/mL in 5 % skim milk / PBS buffer, and HRP conjugated anti-Rabbit IgG should be diluted in 1:50000 - 100000 as second antibody.

Comment: Target Species of Antibody: Human

Restrictions: For Research Use only

Handling

Format: Lyophilized

Reconstitution: Distilled Water.

Concentration: Lot specific

Buffer: Lyophilized from PBS with 2 % sucrose

Handling

| | |
|------------------|---|
| Handling Advice: | Avoid repeat freeze-thaw cycles. |
| Storage: | 4 °C,-20 °C |
| Storage Comment: | Long term: -20°C, the use of 50% glycerol is recommended if storing aliquots in -20°C for long term use (up to 1 year) Short term (less than 1 week): 4°C. Avoid freeze-thaw cycles. |

Images

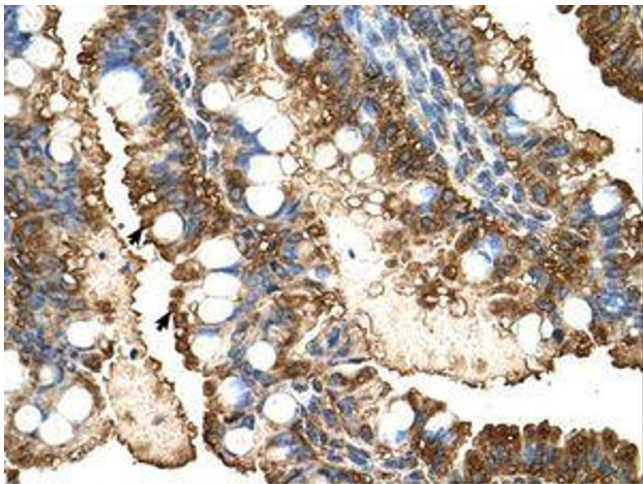


Image 1.

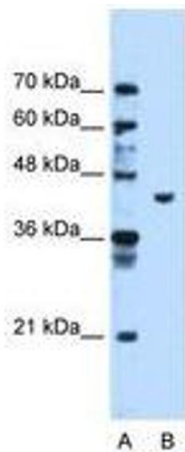


Image 2.