



Datasheet for ABIN321395
anti-ATP5B antibody (AA 131-180)



[Go to Product page](#)

2 Images

Overview

Quantity:	100 µL
Target:	ATP5B
Binding Specificity:	AA 131-180
Reactivity:	Human, Mouse, Rat, Dog, Pig, Cow, Horse, Rabbit, Hamster, Bat
Host:	Rabbit
Clonality:	Polyclonal
Conjugate:	This ATP5B antibody is un-conjugated
Application:	Western Blotting (WB), Immunohistochemistry (IHC), Immunohistochemistry (Paraffin-embedded Sections) (IHC (p))

Product Details

Immunogen:	Synthetic peptide located between aa131-180 of human ATP5B (P06576, NP_001677). Percent identity by BLAST analysis: Human, Chimpanzee, Gorilla, Gibbon, Galago, Marmoset, Mouse, Rat, Hamster, Elephant, Panda, Dog, Cat, Bovine, Bat, Rabbit, Horse, Pig, Zebra finch (100%), Monkey, Chicken, Lizard, Xenopus, Salmon, Zebrafish (92%), Drosophila (91%), Stickleback (85%). Type of Immunogen: Synthetic peptide
Isotype:	IgG
Specificity:	Human ATP5B
Predicted Reactivity:	Percent identity by BLAST analysis: Human, Rat, Dog, Rabbit, Horse, Pig (100%) Xenopus,

Product Details

Zebrafish (92%).

Purification: Protein A purified

Target Details

Target: ATP5B

Alternative Name: ATP5B ([ATP5B Products](#))

Background: Name/Gene ID: ATP5B
Subfamily: ATPase - F type
Family: Transporter

Synonyms: ATP5B, ATPMB, ATPSB, Beta-mtATPase, FOF1-ATP synthase beta subunit, ATP synthase beta subunit

Gene ID: 506

NCBI Accession: [NP_001677](#)

UniProt: [P06576](#)

Pathways: [Proton Transport](#), [Ribonucleoside Biosynthetic Process](#)

Application Details

Application Notes: Approved: IHC, IHC-P, WB

Usage: ELISA titer using peptide based assay: 1:62500. Western Blot: Suggested dilution at 1.25 µg/mL in 5 % skim milk / PBS buffer, and HRP conjugated anti-Rabbit IgG should be diluted in 1:50000 - 100000 as second antibody.

Comment: Target Species of Antibody: Human

Restrictions: For Research Use only

Handling

Format: Lyophilized

Reconstitution: Distilled Water.

Concentration: Lot specific

Handling

Buffer:	Lyophilized from PBS with 2 % sucrose
Handling Advice:	Avoid repeat freeze-thaw cycles.
Storage:	4 °C, -20 °C
Storage Comment:	Long term: -20°C, the use of 50% glycerol is recommended if storing aliquots in -20°C for long term use (up to 1 year) Short term (less than 1 week): 4°C. Avoid freeze-thaw cycles.

Images

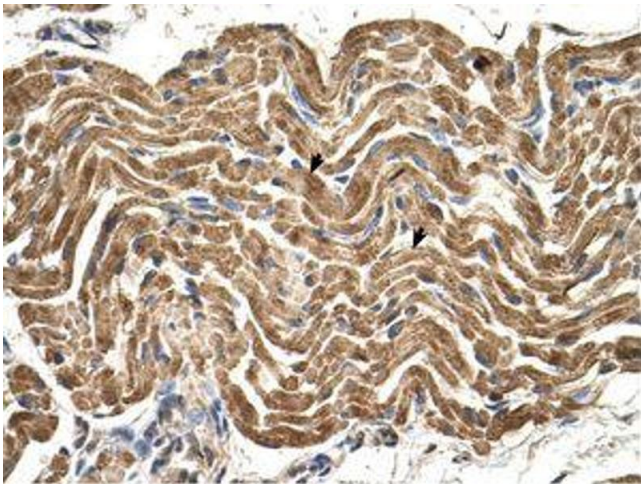


Image 1.

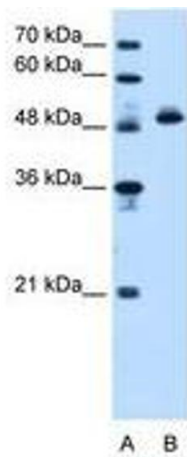


Image 2.