

Datasheet for ABIN321399
anti-ENO3 antibody (N-Term)



[Go to Product page](#)

2 Images

Overview

Quantity:	100 µL
Target:	ENO3
Binding Specificity:	N-Term
Reactivity:	Human, Mouse, Rat, Rabbit, Cow, Dog, Goat, Guinea Pig, Horse, Monkey, Pig
Host:	Rabbit
Clonality:	Polyclonal
Conjugate:	This ENO3 antibody is un-conjugated
Application:	Western Blotting (WB), Immunohistochemistry (IHC), Immunohistochemistry (Paraffin-embedded Sections) (IHC (p))

Product Details

Immunogen:	Synthetic peptide from N-Terminus of human ENO3 (P13929, NP_001967). Percent identity by BLAST analysis: Human, Chimpanzee, Gorilla, Monkey, Marmoset, Mouse, Rat, Goat, Elephant, Panda, Dog, Bovine, Rabbit, Horse, Pig, Guinea pig (100%), Orangutan, Gibbon, Galago, Hamster, Bat, Opossum, Turkey, Zebra finch, Chicken, Platypus, Xenopus, Catfish, Salmon, Smelt, Zebrafish, Blood fluke, Nematode, Grape, Toxoplasma, Arabidopsis, Trichina worm (92%). Type of Immunogen: Synthetic peptide
Isotype:	IgG
Specificity:	Human ENO3
Predicted Reactivity:	Percent identity by BLAST analysis: Human, Mouse, Dog, Rabbit, Pig (100%) Xenopus, Zebrafish

Product Details

(92%).

Purification: Protein A purified

Target Details

Target: ENO3

Alternative Name: ENO3 / Enolase 3 ([ENO3 Products](#))

Background: Name/Gene ID: ENO3

Synonyms: ENO3, Beta-enolase, Enolase 3, Enolase 3 (beta, muscle), Enolase 3, (beta, muscle), Muscle-specific enolase, MSE, Skeletal muscle enolase, GSD13

Gene ID: 2027

NCBI Accession: [NP_001967](#)

UniProt: [P13929](#)

Application Details

Application Notes: Approved: IHC, IHC-P, WB

Usage: ELISA titer using peptide based assay: 1:12500. Western Blot: Suggested dilution at 5.0 µg/mL in 5 % skim milk / PBS buffer, and HRP conjugated anti-Rabbit IgG should be diluted in 1:50000 - 100000 as second antibody.

Comment: Target Species of Antibody: Human

Restrictions: For Research Use only

Handling

Format: Lyophilized

Reconstitution: Distilled Water.

Concentration: Lot specific

Buffer: Lyophilized from PBS with 2 % sucrose

Handling Advice: Avoid repeat freeze-thaw cycles.

Storage: 4 °C, -20 °C

Handling

Storage Comment: Long term: -20°C, the use of 50% glycerol is recommended if storing aliquots in -20°C for long term use (up to 1 year)
Short term (less than 1 week): 4°C. Avoid freeze-thaw cycles.

Images

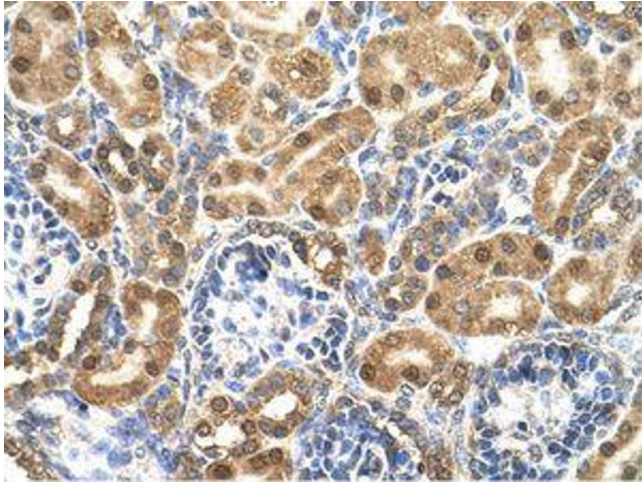


Image 1.

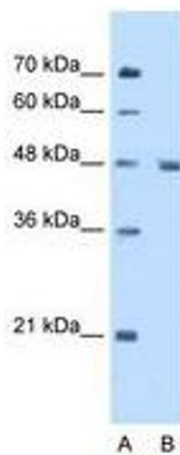


Image 2.