



[Go to Product page](#)

Datasheet for ABIN321403
anti-PEBP1 antibody (C-Term)

1 Image

Overview

Quantity:	100 µL
Target:	PEBP1
Binding Specificity:	C-Term
Reactivity:	Human, Mouse, Cow, Zebrafish (Danio rerio), Monkey, Pig, Horse, Guinea Pig, Chicken, Xenopus laevis
Host:	Rabbit
Clonality:	Polyclonal
Conjugate:	This PEBP1 antibody is un-conjugated
Application:	Western Blotting (WB)

Product Details

Immunogen:	Synthetic peptide from C-Terminus of human PEBP1 (P30086, NP_002558). Percent identity by BLAST analysis: Human, Chimpanzee, Gorilla, Orangutan, Gibbon, Monkey, Galago, Marmoset, Mouse, Elephant, Bovine, Horse, Pig, Guinea pig, Turkey, Chicken, Xenopus, Pike (100%), Dog, Rabbit, Catfish, Stickleback, Pufferfish, Drosophila (92%), Opossum, Trout, Salmon, Zebrafish (85%). Type of Immunogen: Synthetic peptide
Isotype:	IgG
Specificity:	Human PEBP1
Predicted Reactivity:	Percent identity by BLAST analysis: Human, Mouse, Bovine, Horse, Chicken, Xenopus (100%)

Product Details

Dog, Rabbit (92%) Zebrafish (85%).

Purification: Protein A purified

Target Details

Target: PEBP1

Alternative Name: PEBP1 / RKIP ([PEBP1 Products](#))

Background: Name/Gene ID: PEBP1

Synonyms: PEBP1, HCNP, HCNPpp, PBP, Prostatic binding protein, Raf kinase inhibitor protein, Raf kinase inhibitory protein, Prostatic-binding protein, Neuropolypeptide h3, PEBP, PEBP-1, RKIP

Gene ID: 5037

NCBI Accession: [NP_002558](#)

UniProt: [P30086](#)

Pathways: [Feeding Behaviour](#)

Application Details

Application Notes: Approved: WB

Usage: ELISA titer using peptide based assay: 1:312500. Western Blot: Suggested dilution at 1.25 µg/mL in 5 % skim milk / PBS buffer, and HRP conjugated anti-Rabbit IgG should be diluted in 1:50000 - 100000 as second antibody.

Comment: Target Species of Antibody: Human

Restrictions: For Research Use only

Handling

Format: Lyophilized

Reconstitution: Distilled Water.

Concentration: Lot specific

Buffer: Lyophilized from PBS with 2 % sucrose

Handling

Handling Advice: Avoid repeat freeze-thaw cycles.

Storage: 4 °C,-20 °C

Storage Comment: Long term: -20°C, the use of 50% glycerol is recommended if storing aliquots in -20°C for long term use (up to 1 year)

Short term (less than 1 week): 4°C. Avoid freeze-thaw cycles.

Images

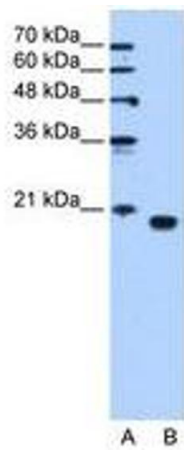


Image 1.