



[Go to Product page](#)

Datasheet for ABIN321436  
**anti-RSU1 antibody (C-Term)**

2 Images

Overview

Quantity:	100 µL
Target:	RSU1
Binding Specificity:	C-Term
Reactivity:	Human, Mouse, Rat, Cow, Dog, Guinea Pig, Horse, Chicken, Hamster, Monkey, Xenopus laevis
Host:	Rabbit
Clonality:	Polyclonal
Conjugate:	This RSU1 antibody is un-conjugated
Application:	Western Blotting (WB), Immunohistochemistry (IHC), Immunohistochemistry (Paraffin-embedded Sections) (IHC (p))

Product Details

Immunogen:	Synthetic peptide from C-Terminus of human RSU1 (Q15404, NP_036557). Percent identity by BLAST analysis: Human, Chimpanzee, Gorilla, Orangutan, Gibbon, Monkey, Galago, Marmoset, Mouse, Rat, Hamster, Elephant, Dog, Bovine, Horse, Opossum, Guinea pig, Zebra finch, Chicken, Platypus, Xenopus (100%), Sheep, Rabbit, Stickleback, Pufferfish, Zebrafish (92%).  Type of Immunogen: Synthetic peptide
Isotype:	IgG
Specificity:	Human RSU1
Predicted Reactivity:	Percent identity by BLAST analysis: Human, Mouse, Rat, Dog, Bovine, Chicken, Xenopus (100%) Sheep, Rabbit, Zebrafish (92%).

## Product Details

---

Purification: Protein A purified

## Target Details

---

Target: RSU1

Alternative Name: RSU1 ([RSU1 Products](#))

Background: Name/Gene ID: RSU1

Synonyms: RSU1, Ras suppressor protein 1, RSP1, RSP-1, Rsu-1

Gene ID: 6251

NCBI Accession: [NP\\_036557](#)

UniProt: [Q15404](#)

## Application Details

---

Application Notes: Approved: IHC, IHC-P, WB

Usage: ELISA titer using peptide based assay: 1:1562500. Western Blot: Suggested dilution at 1.25 µg/mL in 5 % skim milk / PBS buffer, and HRP conjugated anti-Rabbit IgG should be diluted in 1:50000 - 100000 as second antibody.

Comment: Target Species of Antibody: Human

Restrictions: For Research Use only

## Handling

---

Format: Lyophilized

Reconstitution: Distilled Water.

Concentration: Lot specific

Buffer: Lyophilized from PBS with 2 % sucrose

Handling Advice: Avoid repeat freeze-thaw cycles.

Storage: 4 °C, -20 °C

Storage Comment: Long term: -20°C, the use of 50% glycerol is recommended if storing aliquots in -20°C for long term use (up to 1 year)

Short term (less than 1 week): 4°C. Avoid freeze-thaw cycles.

Images



Image 1.

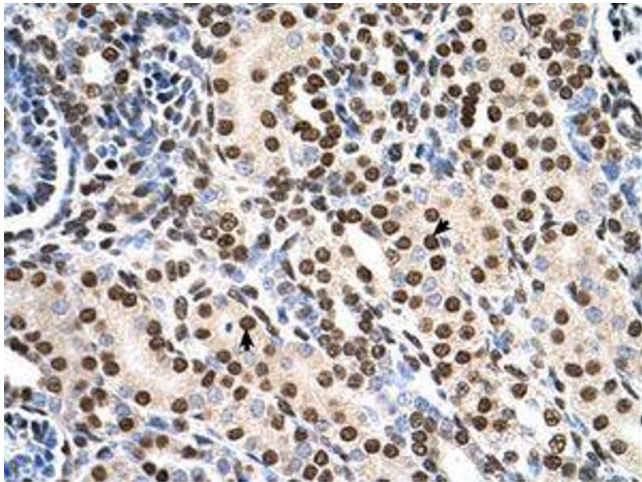


Image 2.