



[Go to Product page](#)

Datasheet for ABIN321444  
**anti-GMPR2 antibody (AA 233-282)**

1 Image

Overview

Quantity:	100 µL
Target:	GMPR2
Binding Specificity:	AA 233-282
Reactivity:	Human, Mouse, Cow, Dog, Guinea Pig, Horse, Rabbit, Zebrafish (Danio rerio), Hamster, Monkey
Host:	Rabbit
Clonality:	Polyclonal
Conjugate:	This GMPR2 antibody is un-conjugated
Application:	Western Blotting (WB)

Product Details

Immunogen:	Synthetic peptide located between aa233-282 of human GMPR2 (Q9P2T1). Percent identity by BLAST analysis: Human, Gibbon, Monkey, Marmoset, Mouse, Hamster, Dog, Rabbit, Horse (100%), Rat, Bat, Pig, Opossum (92%), Bovine, Guinea pig (85%), Elephant (84%).  Type of Immunogen: Synthetic peptide
Isotype:	IgG
Specificity:	Human GMPR2
Predicted Reactivity:	Percent identity by BLAST analysis: Human, Mouse, Dog, Rabbit, Horse (100%) Rat (92%) Bovine, Guinea pig (85%).
Purification:	Protein A purified

## Target Details

---

Target:	GMPR2
Alternative Name:	GMPR2 ( <a href="#">GMPR2 Products</a> )
Background:	Name/Gene ID: GMPR2  Synonyms: GMPR2, GMP reductase 2
Gene ID:	51292
UniProt:	<a href="#">Q9P2T1</a>

## Application Details

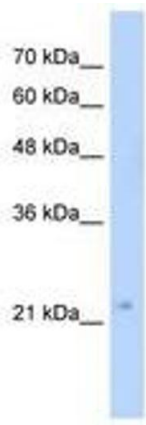
---

Application Notes:	Approved: WB  Usage: ELISA titer using peptide based assay: 1:62500. Western Blot: Suggested dilution at 5.0 µg/mL in 5 % skim milk / PBS buffer, and HRP conjugated anti-Rabbit IgG should be diluted in 1:50000 - 100000 as second antibody.
Comment:	Target Species of Antibody: Human
Restrictions:	For Research Use only

## Handling

---

Format:	Lyophilized
Reconstitution:	Distilled Water.
Concentration:	Lot specific
Buffer:	Lyophilized from PBS with 2 % sucrose
Handling Advice:	Avoid repeat freeze-thaw cycles.
Storage:	4 °C,-20 °C
Storage Comment:	Long term: -20°C, the use of 50% glycerol is recommended if storing aliquots in -20°C for long term use (up to 1 year)  Short term (less than 1 week): 4°C. Avoid freeze-thaw cycles.



**Image 1.**