



[Go to Product page](#)

Datasheet for ABIN321449

anti-LZTFL1 antibody (C-Term)

1 Image

Overview

Quantity:	100 µL
Target:	LZTFL1
Binding Specificity:	C-Term
Reactivity:	Human, Mouse, Rat, Cow, Dog, Guinea Pig, Pig, Bat, Xenopus laevis
Host:	Rabbit
Clonality:	Polyclonal
Conjugate:	This LZTFL1 antibody is un-conjugated
Application:	Western Blotting (WB)

Product Details

Immunogen:	Synthetic peptide from C-Terminus of human LZTFL1 (Q9NQ48, NP_065080). Percent identity by BLAST analysis: Human, Gorilla, Orangutan, Gibbon, Monkey, Galago, Mouse, Rat, Bovine, Bat, Pig, Xenopus (100%), Marmoset, Rabbit, Horse, Opossum, Catfish, Zebrafish (92%), Elephant, Panda, Dog, Turkey, Zebra finch, Chicken, Platypus, Seabass, Stickleback (85%). Type of Immunogen: Synthetic peptide
Isotype:	IgG
Specificity:	Human LZTFL1
Predicted Reactivity:	Percent identity by BLAST analysis: Human, Mouse, Rat, Pig (100%) Rabbit, Zebrafish (92%) Dog, Chicken (85%).
Purification:	Protein A purified

Target Details

Target:	LZTFL1
Alternative Name:	LZTFL1 (LZTFL1 Products)
Background:	Name/Gene ID: LZTFL1 Synonyms: LZTFL1
Gene ID:	54585
NCBI Accession:	NP_065080
UniProt:	Q9NQ48

Application Details

Application Notes:	Approved: WB Usage: ELISA titer using peptide based assay: 1:312500. Western Blot: Suggested dilution at 2.5 µg/mL in 5 % skim milk / PBS buffer, and HRP conjugated anti-Rabbit IgG should be diluted in 1:50000 - 100000 as second antibody.
Comment:	Target Species of Antibody: Human
Restrictions:	For Research Use only

Handling

Format:	Lyophilized
Reconstitution:	Distilled Water.
Concentration:	Lot specific
Buffer:	Lyophilized from PBS with 2 % sucrose
Handling Advice:	Avoid repeat freeze-thaw cycles.
Storage:	4 °C,-20 °C
Storage Comment:	Long term: -20°C, the use of 50% glycerol is recommended if storing aliquots in -20°C for long term use (up to 1 year) Short term (less than 1 week): 4°C. Avoid freeze-thaw cycles.

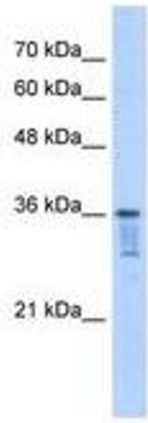


Image 1.