

Datasheet for ABIN321450

anti-Pyrophosphatase (Inorganic) 1 (PPA1) (AA 51-100) antibody



[Go to Product page](#)

1 Image

Overview

Quantity:	100 µL
Target:	Pyrophosphatase (Inorganic) 1 (PPA1)
Binding Specificity:	AA 51-100
Reactivity:	Human, Rat, Mouse, Dog, Zebrafish (Danio rerio), Rabbit, Horse, Guinea Pig, Goat, Cow, Bat, Chicken, Monkey, Pig, Xenopus laevis
Host:	Rabbit
Clonality:	Polyclonal
Conjugate:	Un-conjugated
Application:	Western Blotting (WB)

Product Details

Immunogen:	Synthetic peptide located between aa51-100 of human PPA1 (Q15181, NP_066952). Percent identity by BLAST analysis: Human, Chimpanzee, Gorilla, Orangutan, Gibbon, Monkey, Galago, Marmoset, Mouse, Rat, Goat, Elephant, Dog, Bovine, Bat, Rabbit, Horse, Pig, Opossum, Guinea pig, Turkey, Chicken, Platypus, Lizard, Xenopus, Trout, Catfish, Salmon, Smelt, Zebrafish (100%), Zebra finch, Sablefish, Stickleback (92%), Seabass (85%), Drosophila, Beetle (84%). Type of Immunogen: Synthetic peptide
Isotype:	IgG
Specificity:	Human
Predicted Reactivity:	Percent identity by BLAST analysis: Human, Mouse, Rat, Dog, Goat, Rabbit, Horse, Pig, Chicken,

Product Details

Zebrafish (100%).

Purification: Protein A purified

Target Details

Target: Pyrophosphatase (Inorganic) 1 (PPA1)

Alternative Name: PPA1 ([PPA1 Products](#))

Target Type: Viral Protein

Background: Name/Gene ID: PPA1

Synonyms: PPA1, Inorganic pyrophosphatase 1, Inorganic pyrophosphatase, PP, Pyrophosphatase (inorganic), Pyrophosphatase 1, PP1, Ppase, SID6-8061, Diphosphate phosphohydrolase, Inorganic diphosphatase, IOPPP, Pyrophosphatase (inorganic) 1

Gene ID: 5464

NCBI Accession: [NP_066952](#)

UniProt: [Q15181](#)

Application Details

Application Notes: Approved: WB

Usage: ELISA titer using peptide based assay: 1:62500. Western Blot: Suggested dilution at 5.0 µg/mL in 5 % skim milk / PBS buffer, and HRP conjugated anti-Rabbit IgG should be diluted in 1:50000 - 100000 as second antibody.

Comment: Target Species of Antibody: Human

Restrictions: For Research Use only

Handling

Format: Lyophilized

Reconstitution: Distilled Water.

Concentration: Lot specific

Buffer: Lyophilized from PBS with 2 % sucrose

Handling

Handling Advice: Avoid repeat freeze-thaw cycles.

Storage: 4 °C, -20 °C

Storage Comment: Long term: -20°C, the use of 50% glycerol is recommended if storing aliquots in -20°C for long term use (up to 1 year)

Short term (less than 1 week): 4°C. Avoid freeze-thaw cycles.

Images

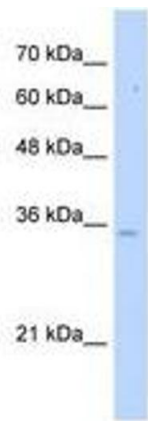


Image 1.