



[Go to Product page](#)

Datasheet for ABIN321485
anti-FDFT1 antibody (AA 101-150)

1 Image

Overview

Quantity:	100 µL
Target:	FDFT1
Binding Specificity:	AA 101-150
Reactivity:	Human, Mouse, Cow, Dog, Horse, Pig, Rabbit, Monkey
Host:	Rabbit
Clonality:	Polyclonal
Conjugate:	This FDFT1 antibody is un-conjugated
Application:	Western Blotting (WB)

Product Details

Immunogen:	Synthetic peptide located between aa101-150 of human FDFT1 (P37268, NP_004453). Percent identity by BLAST analysis: Human, Chimpanzee, Gorilla, Orangutan, Gibbon, Monkey, Galago, Marmoset, Mouse, Panda, Dog, Bovine, Rabbit, Horse, Pig, Zebra finch (100%), Elephant, Bat, Turkey, Chicken, Xenopus (92%), Rat, Hamster, Opossum, Guinea pig, Stickleback (85%). Type of Immunogen: Synthetic peptide
Isotype:	IgG
Specificity:	Human FDFT1
Predicted Reactivity:	Percent identity by BLAST analysis: Human, Mouse, Dog, Bovine, Rabbit, Horse, Pig (100%) Chicken (92%).
Purification:	Protein A purified

Target Details

Target:	FDFT1
Alternative Name:	FDFT1 / Squalene Synthase (FDFT1 Products)
Background:	Name/Gene ID: FDFT1 Synonyms: FDFT1, DGPT, ERG9, SS, Squalene synthetase, SQS, FPP:FPP farnesyltransferase, Squalene synthase
Gene ID:	2222
NCBI Accession:	NP_004453
UniProt:	P37268
Pathways:	Regulation of Lipid Metabolism by PPARalpha

Application Details

Application Notes:	Approved: WB Usage: ELISA titer using peptide based assay: 1:12500. Western Blot: Suggested dilution at 2.5 µg/mL in 5 % skim milk / PBS buffer, and HRP conjugated anti-Rabbit IgG should be diluted in 1:50000 - 100000 as second antibody.
Comment:	Target Species of Antibody: Human
Restrictions:	For Research Use only

Handling

Format:	Lyophilized
Reconstitution:	Distilled Water.
Concentration:	Lot specific
Buffer:	Lyophilized from PBS with 2 % sucrose
Handling Advice:	Avoid repeat freeze-thaw cycles.
Storage:	4 °C, -20 °C
Storage Comment:	Long term: -20°C, the use of 50% glycerol is recommended if storing aliquots in -20°C for long term use (up to 1 year) Short term (less than 1 week): 4°C. Avoid freeze-thaw cycles.

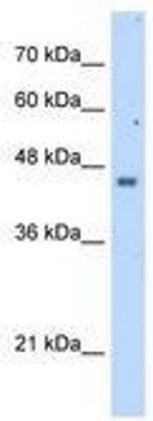


Image 1.