



Datasheet for ABIN321494  
**anti-PCMT1 antibody (AA 209-258)**



[Go to Product page](#)

1 Image

Overview

Quantity:	100 µL
Target:	PCMT1
Binding Specificity:	AA 209-258
Reactivity:	Human, Mouse, Rat, Cow, Dog, Guinea Pig, Rabbit, Bat, Chicken, Monkey, Pig, Xenopus laevis
Host:	Rabbit
Clonality:	Polyclonal
Conjugate:	This PCMT1 antibody is un-conjugated
Application:	Western Blotting (WB)

Product Details

Immunogen:	Synthetic peptide located between aa209-258 of human PCMT1 (P22061, NP_005380). Percent identity by BLAST analysis: Human, Chimpanzee, Orangutan, Gibbon, Monkey, Galago, Marmoset, Mouse, Rat, Elephant, Dog, Bovine, Bat, Rabbit, Pig, Opossum, Guinea pig, Turkey, Chicken, Platypus, Xenopus (100%), Horse, Frog, Salmon, Smelt, Stickleback, Zebrafish (92%), Catfish (91%), Rice, Grape, Arabidopsis (85%).  Type of Immunogen: Synthetic peptide
Isotype:	IgG
Specificity:	Human PCMT1
Predicted Reactivity:	Percent identity by BLAST analysis: Human, Mouse, Rat, Dog, Bovine, Rabbit, Guinea pig, Chicken, Xenopus (100%).

## Product Details

---

Purification: Protein A purified

## Target Details

---

Target: PCMT1

Alternative Name: PCMT1 ([PCMT1 Products](#))

Background: Name/Gene ID: PCMT1

Synonyms: PCMT1, PIMT

Gene ID: 5110

NCBI Accession: [NP\\_005380](#)

UniProt: [P22061](#)

Pathways: [Ribonucleoprotein Complex Subunit Organization](#)

## Application Details

---

Application Notes: Approved: WB

Usage: ELISA titer using peptide based assay: 1:312500. Western Blot: Suggested dilution at 2.5 µg/mL in 5 % skim milk / PBS buffer, and HRP conjugated anti-Rabbit IgG should be diluted in 1:50000 - 100000 as second antibody.

Comment: Target Species of Antibody: Human

Restrictions: For Research Use only

## Handling

---

Format: Lyophilized

Reconstitution: Distilled Water.

Concentration: Lot specific

Buffer: Lyophilized from PBS with 2 % sucrose

Handling Advice: Avoid repeat freeze-thaw cycles.

Storage: 4 °C, -20 °C

Storage Comment: Long term: -20°C, the use of 50% glycerol is recommended if storing aliquots in -20°C for long

## Handling

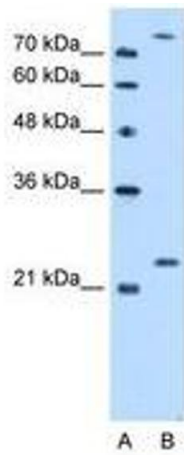
---

term use (up to 1 year)

Short term (less than 1 week): 4°C. Avoid freeze-thaw cycles.

## Images

---



**Image 1.**