

Datasheet for ABIN321508
anti-STK39 antibody (AA 151-200)[Go to Product page](#)

1 Image

Overview

Quantity:	100 µL
Target:	STK39
Binding Specificity:	AA 151-200
Reactivity:	Human, Mouse, Rat, Dog, Horse, Rabbit, Cow, Guinea Pig, Bat, Monkey, Chicken, Pig
Host:	Rabbit
Clonality:	Polyclonal
Conjugate:	This STK39 antibody is un-conjugated
Application:	Western Blotting (WB)

Product Details

Immunogen:	Synthetic peptide located between aa151-200 of human STK39 (Q9UEW8). Percent identity by BLAST analysis: Human, Chimpanzee, Gorilla, Gibbon, Monkey, Galago, Marmoset, Mouse, Rat, Elephant, Dog, Bovine, Bat, Rabbit, Horse, Pig, Guinea pig, Zebra finch, Chicken, Platypus (100%), Opossum, Turkey, Lizard, Xenopus (92%). Type of Immunogen: Synthetic peptide
Isotype:	IgG
Specificity:	Human STK39 / SPAK
Predicted Reactivity:	Percent identity by BLAST analysis: Human, Mouse, Rat, Dog, Bovine, Rabbit, Horse, Guinea pig, Chicken (100%) Xenopus (85%).
Purification:	Protein A purified

Target Details

Target:	STK39
Alternative Name:	STK39 / SPAK (STK39 Products)
Background:	Name/Gene ID: STK39 Subfamily: FRAY Family: Protein Kinase Synonyms: STK39, Serine threonine kinase 39, STE20/SPS1 homolog, Ste20-like protein kinase, DCHT, SPAK, Ste-20-related kinase
Gene ID:	27347
UniProt:	Q9UEW8

Application Details

Application Notes:	Approved: WB Usage: ELISA titer using peptide based assay: 1:62500. Western Blot: Suggested dilution at 5.0 µg/mL in 5 % skim milk / PBS buffer, and HRP conjugated anti-Rabbit IgG should be diluted in 1:50000 - 100000 as second antibody. Not recommended for: IHC-P
Comment:	Target Species of Antibody: Human
Restrictions:	For Research Use only

Handling

Format:	Lyophilized
Reconstitution:	Distilled Water.
Concentration:	Lot specific
Buffer:	Lyophilized from PBS with 2 % sucrose
Handling Advice:	Avoid repeat freeze-thaw cycles.
Storage:	4 °C,-20 °C
Storage Comment:	Long term: -20°C, the use of 50% glycerol is recommended if storing aliquots in -20°C for long term use (up to 1 year)

Handling

Short term (less than 1 week): 4°C. Avoid freeze-thaw cycles.

Images

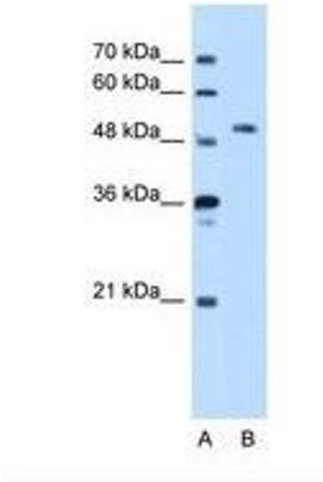


Image 1.