

Datasheet for ABIN321534  
**anti-PGS1 antibody (AA 451-500)**[Go to Product page](#)

## 1 Image

## Overview

Quantity:	100 µL
Target:	PGS1
Binding Specificity:	AA 451-500
Reactivity:	Human, Mouse, Rat, Cow, Guinea Pig, Dog, Horse, Rabbit, Monkey, Chicken, Hamster, Xenopus laevis
Host:	Rabbit
Clonality:	Polyclonal
Conjugate:	This PGS1 antibody is un-conjugated
Application:	Western Blotting (WB)

## Product Details

Immunogen:	Synthetic peptide located between aa451-500 of human PGS1 (Q32NB8). Percent identity by BLAST analysis: Human, Chimpanzee, Gorilla, Orangutan, Monkey, Galago, Marmoset, Mouse, Rat, Hamster, Elephant, Dog, Bovine, Rabbit, Horse, Opossum, Guinea pig, Turkey, Chicken, Lizard, Xenopus, Seabass, Salmon, Stickleback (100%), Beetle (85%).  Type of Immunogen: Synthetic peptide
Isotype:	IgG
Specificity:	Human PGS1
Predicted Reactivity:	Percent identity by BLAST analysis: Human, Mouse, Rat, Dog, Rabbit, Horse, Guinea pig, Xenopus (100%).

## Product Details

Purification: Protein A purified

## Target Details

Target: PGS1

Alternative Name: PGS1 ([PGS1 Products](#))

Background: Name/Gene ID: PGS1

Synonyms: PGS1, DKFZP762M186, PGP synthase 1

Gene ID: 9489

UniProt: [Q32NB8](#)

## Application Details

Application Notes: Approved: WB

Usage: ELISA titer using peptide based assay: 1:12500. Western Blot: Suggested dilution at 1.25 µg/mL in 5 % skim milk / PBS buffer, and HRP conjugated anti-Rabbit IgG should be diluted in 1:50000 - 100000 as second antibody.

Comment: Target Species of Antibody: Human

Restrictions: For Research Use only

## Handling

Format: Lyophilized

Reconstitution: Distilled Water.

Concentration: Lot specific

Buffer: Lyophilized from PBS with 2 % sucrose

Handling Advice: Avoid repeat freeze-thaw cycles.

Storage: 4 °C, -20 °C

Storage Comment: Long term: -20°C, the use of 50% glycerol is recommended if storing aliquots in -20°C for long term use (up to 1 year)

Short term (less than 1 week): 4°C. Avoid freeze-thaw cycles.

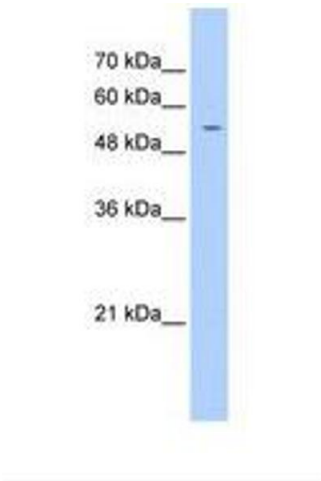


Image 1.