



[Go to Product page](#)

Datasheet for ABIN321580

anti-TMEM126B antibody (AA 141-190)

1 Image

Overview

Quantity:	100 µL
Target:	TMEM126B
Binding Specificity:	AA 141-190
Reactivity:	Human, Rat
Host:	Rabbit
Clonality:	Polyclonal
Conjugate:	This TMEM126B antibody is un-conjugated
Application:	Western Blotting (WB)

Product Details

Immunogen:	Synthetic peptide located between aa141-190 of human TMEM126B (A8K535, NP_060950). Percent identity by BLAST analysis: Human, Chimpanzee, Gorilla, Gibbon, Monkey (100%), Marmoset, Dog, Bat, Horse, Pig, Guinea pig (92%), Bovine (91%), Mouse, Rat, Hamster, Rabbit (85%). Type of Immunogen: Synthetic peptide
Isotype:	IgG
Specificity:	Human TMEM126B
Predicted Reactivity:	Percent identity by BLAST analysis: Human (100%) Dog, Pig, Guinea pig (92%) Bovine (91%) Rat (85%).
Purification:	Protein A purified

Target Details

Target: TMEM126B

Alternative Name: TMEM126B ([TMEM126B Products](#))

Background: Name/Gene ID: TMEM126B

Synonyms: TMEM126B, HT007, Transmembrane protein 126B

Gene ID: 55863

NCBI Accession: [NP_060950](#)

UniProt: [Q8IUX1](#)

Application Details

Application Notes: Approved: WB

Usage: ELISA titer using peptide based assay: 1:312500. Western Blot: Suggested dilution at 1.25 µg/mL in 5 % skim milk / PBS buffer, and HRP conjugated anti-Rabbit IgG should be diluted in 1:50000 - 100000 as second antibody.

Comment: Target Species of Antibody: Human

Restrictions: For Research Use only

Handling

Format: Lyophilized

Reconstitution: Distilled Water.

Concentration: Lot specific

Buffer: Lyophilized from PBS with 2 % sucrose

Handling Advice: Avoid repeat freeze-thaw cycles.

Storage: 4 °C, -20 °C

Storage Comment: Long term: -20°C, the use of 50% glycerol is recommended if storing aliquots in -20°C for long term use (up to 1 year)

Short term (less than 1 week): 4°C. Avoid freeze-thaw cycles.

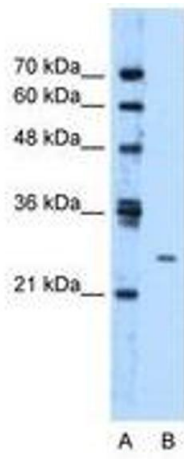


Image 1.