



[Go to Product page](#)

Datasheet for ABIN321585  
**anti-C20ORF24 antibody (N-Term)**

1 Image

Overview

Quantity:	100 µL
Target:	C20ORF24
Binding Specificity:	N-Term
Reactivity:	Human, Mouse, Rat, Dog, Horse, Rabbit, Monkey
Host:	Rabbit
Clonality:	Polyclonal
Conjugate:	This C20ORF24 antibody is un-conjugated
Application:	Western Blotting (WB)

Product Details

Immunogen:	Synthetic peptide from N-Terminus of human C20orf24 (Q9BUV8-2, NP_061328). Percent identity by BLAST analysis: Human, Chimpanzee, Gorilla, Gibbon, Monkey, Marmoset, Mouse, Rat, Elephant, Dog, Rabbit, Horse (100%), Panda, Opossum, Guinea pig (92%), Bovine (85%).  Type of Immunogen: Synthetic peptide
Isotype:	IgG
Specificity:	Human C20orf24
Predicted Reactivity:	Percent identity by BLAST analysis: Human, Rabbit (100%).
Purification:	Protein A purified

## Target Details

---

Target: C20ORF24

Alternative Name: C20orf24 ([C20ORF24 Products](#))

Background: Name/Gene ID: C20orf24

Synonyms: C20orf24, PNAS-11, RIP5, Rab5-interacting protein

Gene ID: 55969

NCBI Accession: [NP\\_061328](#)

## Application Details

---

Application Notes: Approved: WB

Usage: ELISA titer using peptide based assay: 1:62500. Western Blot: Suggested dilution at 2.5 µg/mL in 5 % skim milk / PBS buffer, and HRP conjugated anti-Rabbit IgG should be diluted in 1:50000 - 100000 as second antibody.

Comment: Target Species of Antibody: Human

Restrictions: For Research Use only

## Handling

---

Format: Lyophilized

Reconstitution: Distilled Water.

Concentration: Lot specific

Buffer: Lyophilized from PBS with 2 % sucrose

Handling Advice: Avoid repeat freeze-thaw cycles.

Storage: 4 °C, -20 °C

Storage Comment: Long term: -20°C, the use of 50% glycerol is recommended if storing aliquots in -20°C for long term use (up to 1 year)

Short term (less than 1 week): 4°C. Avoid freeze-thaw cycles.

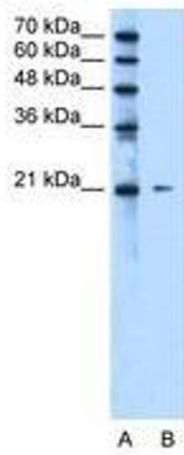


Image 1.