

Datasheet for ABIN321781 anti-ING1 antibody (AA 178-227)



[Go to Product page](#)

1 Image

Overview

Quantity:	100 µL
Target:	ING1
Binding Specificity:	AA 178-227
Reactivity:	Human, Mouse, Rat, Cow, Dog, Guinea Pig, Zebrafish (Danio rerio), Monkey, Pig, Xenopus laevis
Host:	Rabbit
Clonality:	Polyclonal
Conjugate:	This ING1 antibody is un-conjugated
Application:	Western Blotting (WB)

Product Details

Immunogen:	Synthetic peptide located between aa178-227 of human ING1 (Q5T9H0, NP_937862). Percent identity by BLAST analysis: Human, Chimpanzee, Gorilla, Gibbon, Monkey, Galago, Marmoset, Mouse, Rat, Elephant, Panda, Dog, Bovine, Pig, Opossum, Guinea pig, Lizard, Xenopus (100%), Rabbit, Horse, Turkey, Zebra finch, Chicken, Platypus (92%), Zebrafish (85%). Type of Immunogen: Synthetic peptide
Isotype:	IgG
Specificity:	Human ING1
Predicted Reactivity:	Percent identity by BLAST analysis: Human, Mouse, Rat, Dog, Bovine, Pig, Guinea pig, Xenopus (100%) Rabbit, Horse, Chicken (92%) Zebrafish (85%).
Purification:	Protein A purified

Target Details

Target:	ING1
Alternative Name:	ING1 (ING1 Products)
Background:	Name/Gene ID: ING1 Synonyms: ING1, Growth inhibitor ING1, Growth inhibitor p33ing1, Inhibitor of growth protein 1, p33, p33ING1, p47ING1a, Tumor suppressor ING1, p33ING1b, Growth inhibitory protein ING1, Inhibitor of growth 1, p24ING1c
Gene ID:	3621
NCBI Accession:	NP_937862
UniProt:	Q9UK53
Pathways:	Protein targeting to Nucleus , Autophagy

Application Details

Application Notes:	Approved: WB Usage: ELISA titer using peptide based assay: 1:62500. Western Blot: Suggested dilution at 2.5 µg/mL in 5 % skim milk / PBS buffer, and HRP conjugated anti-Rabbit IgG should be diluted in 1:50000 - 100000 as second antibody.
Comment:	Target Species of Antibody: Human
Restrictions:	For Research Use only

Handling

Format:	Lyophilized
Reconstitution:	Distilled Water.
Concentration:	Lot specific
Buffer:	Lyophilized from PBS with 2 % sucrose
Handling Advice:	Avoid repeat freeze-thaw cycles.
Storage:	4 °C,-20 °C
Storage Comment:	Long term: -20°C, the use of 50% glycerol is recommended if storing aliquots in -20°C for long term use (up to 1 year)

Handling

Short term (less than 1 week): 4°C. Avoid freeze-thaw cycles.

Images

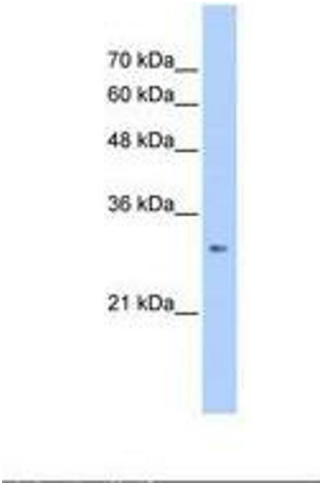


Image 1.